



www.lanagrossa.com

JACKET · ALESSIA

Design 09 – About Berlin 09

JACKET • ALESSIA

Design 09 – About Berlin 09



Size 36 (40, 44, 48)

Instructions are given for first size. Figures in parenthesis refer to larger sizes. When only one figure is given, it applies to all sizes.

Materials: 450 (500, 550, 600) g of Lana Grossa **Alessia** (76% cotton, 20% recycled polyester, 4% polyester; 135 m/50 g) in Charcoal/Grey/Natural (**col 5**). Size 3.5 and 4 mm needles; size 3.5 mm circular needle, 80 cm long; four 18 mm mother-of-pearl buttons in natural [by Union Knopf, item 46286, col 14].

Selvage sts: On every row: Purl first and last st.

Rib patt: K1, p1.

Slip stitch patt: Work according to chart. Numbers at right edge of chart indicate RS rows, numbers at left edge of chart indicate WS rows. Work to patt rep, work 2 sts between arrows for patt rep, work to end of chart. Rep rows 1 – 8 for slip st patt.

St st: K on RS, p on WS.

Full-fashion decrease: At beg of RS row, selvage st, skp; at end of RS row, work to last 3 sts, k2tog, selvage st.

Gauge: 25 sts and 30 rows = 10 x 10 cm in slip st patt on size 4 mm needles.

Back: With size 3.5 mm needles cast on 101 (111, 121, 131) sts. Next row (WS): Selvage st, * p1, k1; rep from * to last 2 sts, p1, selvage st. Work in rib patt as set by last row for a total of 21 rows and piece meas 6 cm from cast-on. Change to size 4 mm needles. Work in St st for 2 rows, increasing 12 sts evenly across first row = 113 (123, 133, 143) sts. Work chart for 98 rows and piece meas 33 cm from end of rib patt. Place marker in first and last st on last WS row to indicate beg of armholes. Cont chart for 54 (58, 60, 64) rows and piece meas 18 (19, 20, 21) cm from armhole markers. Bind off all sts. Mark center 39 sts for neck.

Left front: With size 3.5 mm needles cast on 52 (57, 62, 67) sts. Next row (WS): Selvage st, * p1, k1; rep from * to last 1 (2, 1, 2) st(s), p0 (p1, p0, p1), selvage st. Work in rib patt as set by last row for a total of 21 rows and piece meas 6 cm from

cast-on. Change to size 4 mm needles. Work in St st for 2 rows, increasing 5 sts evenly across first row = 57 (62, 67, 72) sts. Work chart for 64 rows and piece meas 22 cm from end of rib patt: For size 36 and 44, work to patt rep, work 2 sts between arrows for patt rep, work to end of chart. For size 40 and 48, work first chart st = selvage st, work patt rep to last st, work last chart st = selvage st. Shape neck: Working full-fashion dec, dec 1 st at end of next RS row, then every alt RS row 19 times. At same time, when same length as back to armhole, place armhole marker at right edge and when same length as back to shoulder, bind off rem 37 (42, 47, 52) shoulder sts.

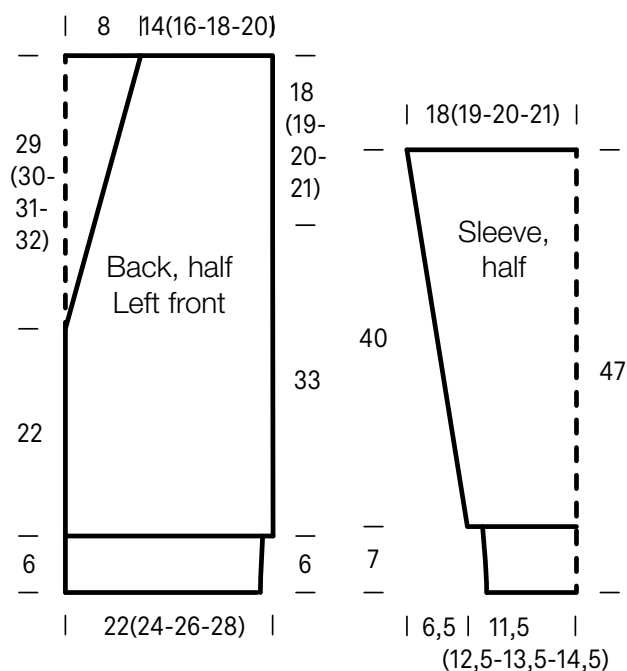
Right front: Work same as left front, reversing all shaping and patt placement.

Sleeves: With size 3.5 mm needles cast on 55 (59, 63, 69) sts. Next row (WS): Selvage st, * p1, k1; rep from * to last 2 sts, p1, selvage st. Work in rib patt as set by last row for a total of 23 rows and piece meas 7 cm from cast-on. Change to size 4 mm needles. Work in St st for 2 rows, increasing 6 sts evenly across first row = 61 (65, 69, 75) sts. Work chart and shape sleeve as foll: Inc 1 st at each end of 3rd row, then every 8th row 7 times, then every 6th row 8 times = 93 (97, 101, 107) sts. Work increased sts into patt. Work even until chart has been worked a total of 118 rows. Loosely bind off all sts.

Finishing: Pin pieces to measurements and block. Sew shoulder seams. **Buttonhole band:** With size 3.5 mm circular needle and RS facing, beg at bottom edge of right front and ending at center back neck, pick up and k 127 (129, 131, 133) sts evenly along right front edge and half of back neck edge. Next row (WS): Knit. Next row (RS): Selvage st, * k1, p1; rep from * to last 2 sts, k1, selvage st. Next row (WS): Work in rib patt as established. Next RS (buttonhole) row: Work first 7 sts, bind off 2 sts, [work 14 sts, bind off 2 sts] 3 times, work to end. On foll WS row, cast on 2 sts over each set of bound-off sts. Cont in rib patt for 4 more rows. Bind off all sts in rib. **Button band:** With size 3.5 mm circular needle and RS facing, beg at center back neck and ending at bottom edge of left front, pick up and k 127 (129, 131, 133) sts evenly along half of back neck edge and left front edge. Work same as buttonhole band, omitting buttonholes. Sew short edges of bands tog. Sew on sleeves between markers. Sew side and sleeve seams. Sew on buttons.

JACKET · ALESSIA

Design 09 – About Berlin 09



Chart

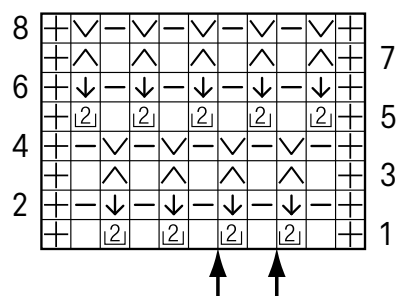


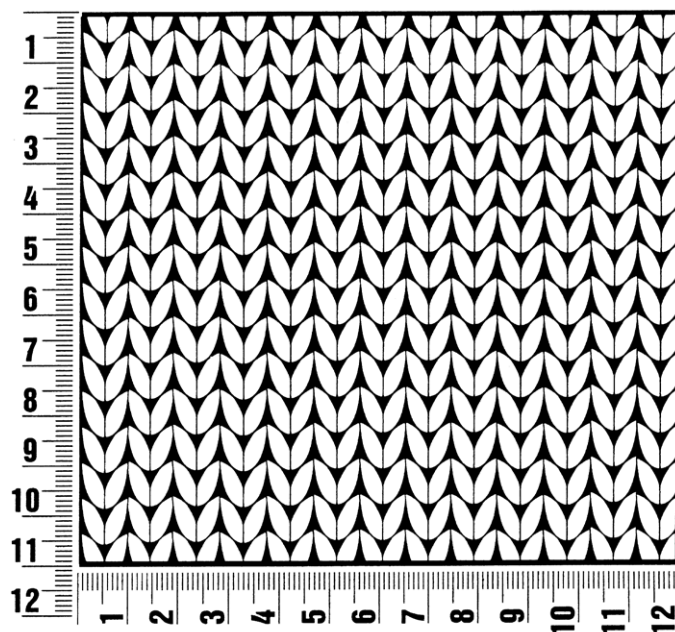
Chart key:

- ⊕ = selvage st
- = k1
- ▬ = p1
- [2] = yo twice, k1
- ↓ = sl 1 pwise wyif, dropping yos and pulling st up to elongate
- ∇ = sl 1 pwise wyif
- ∧ = sl 1 pwise wyib

Gauge Swatch

Before you begin ...

...make a gauge swatch. Use the recommended needles, yarns and pattern stitch for your gauge swatch. It should measure approx. 12 cm x 12 cm. Cast-on and bind-off rows, as well as selvage stitches should not be included in the measurement. Pin your swatch and block it as you would the finished pieces of the garment. Count stitches and rows over 10 cm. If your gauge swatch is too small, switch to larger needles. If your gauge swatch is too big, switch to smaller needles.



Abbreviations

beg = begin(ning) · **ch** = chain · **cont** = continue · **dec** = decreas(e)(ing) · **inc** = increas(e)(ing) · **k** = knit · **kwise** = as if to knit
meas = measures · **M1L** = lift strand between sts from front to back and knit this strand through the back loop · **M1R** = lift strand between sts from the back and knit this strand through the front loop · **patt** = pattern · **pm** = place marker · **p** = purl
pwise = as if to purl · **rem** = remain(ing) · **rep** = repeat(s) · **rev St st** = reverse stockinette stitch · **rnd(s)** = round(s) · **RS** = right side · **sc** = single crochet · **skp** = slip 1 stitch as if to knit, knit 1 stitch, pass slipped stitch over knitted stitch · **sk2p** = slip 1 stitch as if to knit, knit 2 together, pass slipped stitch over knitted stitch · **s2kp** = slip 2 stitches as if to knit, k 1 stitch, pass slipped stitches over knitted stitch · **sl** = slip · **st(s)** = stitch(es) · **St st** = stockinette stitch · **tbl** = through the back loop · **tog** = together · **wyib** = with yarn in back of work · **wyif** = with yarn in front of work · **WS** = wrong side · **yo(s)** = yarn over(s)

Publisher's Info

Publisher: Lana Grossa GmbH, Gaimersheim, www.lanagrossa.com

Photographer: Yannick Schütte