



www.lanagrossa.com

TOP · ABOUT BERLIN SPOTTY

Design 10 – About Berlin 09

TOP · ABOUT BERLIN SPOTTY

Design 10 – About Berlin 09



Size 34 – 38 (40/42)

Instructions are given for smaller size. Figure in parenthesis refers to larger size. When only one figure is given, it applies to both sizes.

Materials: 250 (300) g of Lana Grossa **About Berlin Spotty** (55% cotton, 26% polyamide, 19% polyester; 125 m/50 g) in Silver Variegated (**col 6**). Size 3 and 4 mm needles; size 4 mm circular needle, 50 cm long.

Selvage stitches: On every row: Sl first st kwise, k last st.

Rib patt: K1, p1.

St st: K on RS, p on WS.

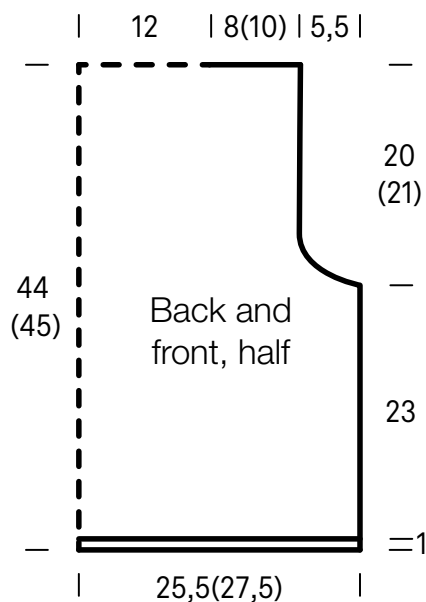
Gauge: 23.5 sts and 32 rows = 10 x 10 cm in St st on size 4 mm needles.

Back: With size 3 mm needles cast on 137 (147) sts. Beg and end with a WS row and working first and last st as selvage sts, work in rib patt for 3 rows and piece meas 1 cm from cast-on. Change to size 4 mm needles. Maintaining selvage sts, work in St st, decreasing 15 sts evenly across first row = 122 (132)

sts, until piece meas 23 cm from end of rib patt, ending with a WS row. Shape armholes: Bind off 4 sts at beg of next 2 rows, 3 sts at beg of next 2 rows, 2 sts at beg of next 4 rows, 1 st at beg of next 4 rows = 96 (106) sts. Work even until armhole meas 20 (21) cm, ending with a WS row. Next row (RS): Bind off 20 (25) sts, k56 and place on holder, bind off rem 20 (25) sts.

Front: Work same as back.

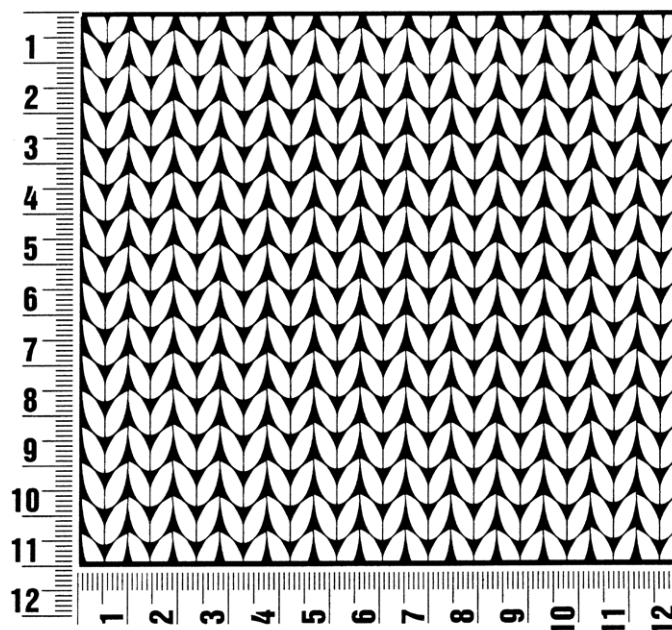
Finishing: Pin pieces to measurements and block. Sew shoulder and side seams. **Rolled neck edging:** With size 4 mm circular needle, pick up and k 114 sts around neck edge: 56 sts each from back and front neck holder and 1 st at each shoulder line [mark these 2 sts]. Place beg of rnd marker and join for working in rnds. Rnd 1: * Knit to marked st, M1R, k1, M1R; rep from * once more. Cont working St st in rnds (k every rnd), rep rnd 1 incs every alt rnd 3 times, always working M1R inc before and after prev incs = 130 sts. Work 3 rnds even. Loosely bind off all sts. **Rolled armhole edging:** With size 4 mm circular needle, pick up and k 110 (114) sts evenly around armhole edge. Place beg of rnd marker and join for working in rnds. Work St st in rnds for 9 rnds. Loosely bind off all sts.



Gauge Swatch

Before you begin ...

...make a gauge swatch. Use the recommended needles, yarns and pattern stitch for your gauge swatch. It should measure approx. 12 cm x 12 cm. Cast-on and bind-off rows, as well as selvage stitches should not be included in the measurement. Pin your swatch and block it as you would the finished pieces of the garment. Count stitches and rows over 10 cm. If your gauge swatch is too small, switch to larger needles. If your gauge swatch is too big, switch to smaller needles.



Abbreviations

beg = begin(ning) · **ch** = chain · **cont** = continue · **dec** = decreas(e)(ing) · **inc** = increas(e)(ing) · **k** = knit · **kwise** = as if to knit
meas = measures · **M1L** = lift strand between sts from front to back and knit this strand through the back loop · **M1R** = lift strand between sts from the back and knit this strand through the front loop · **patt** = pattern · **pm** = place marker · **p** = purl
pwise = as if to purl · **rem** = remain(ing) · **rep** = repeat(s) · **rev St st** = reverse stockinette stitch · **rnd(s)** = round(s) · **RS** = right side · **sc** = single crochet · **skp** = slip 1 stitch as if to knit, knit 1 stitch, pass slipped stitch over knitted stitch · **sk2p** = slip 1 stitch as if to knit, knit 2 together, pass slipped stitch over knitted stitch · **s2kp** = slip 2 stitches as if to knit, k 1 stitch, pass slipped stitches over knitted stitch · **sl** = slip · **st(s)** = stitch(es) · **St st** = stockinette stitch · **tbl** = through the back loop · **tog** = together · **wyib** = with yarn in back of work · **wyif** = with yarn in front of work · **WS** = wrong side · **yo(s)** = yarn over(s)

Publisher's Info

Publisher: Lana Grossa GmbH, Gaimersheim, www.lanagrossa.com

Photographer: Yannick Schütte