



www.lanagrossa.com



TOP · ABOUT BERLIN SPOTTY

Design 16 – About Berlin 09

TOP • ABOUT BERLIN SPOTTY

Design 16 – About Berlin 09



Size 34 – 38 (40/42)

Instructions are given for smaller size. Figure in parenthesis refers to larger size. When only one figure is given, it applies to both sizes.

Materials: 250 (300) g of Lana Grossa **About Berlin Spotty** (55% cotton, 26% polyamide, 19% polyester; 125 m/50 g) in Mustard Variegated (**col 3**). Size 3 and 4 mm needles; size 4 mm circular needle, 50 cm long.

Selvage stitches: On every row: Sl first st kwise, k last st.

Rib patt: K2, p2.

Lace patt: Work according to chart. Numbers at right edge of chart indicate RS rows, numbers at left edge of chart indicate WS rows. Work to patt rep, work 3 sts between arrows for patt rep, work to end of chart. Rep rows 1 – 6 for lace patt.

Gauge: 22.5 sts and 28 rows = 10 x 10 cm in lace patt on size 4 mm needles.

Back: With size 3 mm needles cast on 110 (118) sts. Next row (WS): Selvage st, p1, * k2, p2; rep from * to last 4 sts, k2, p1, selvage st. Work in rib patt as set by last row for a

total of 21 rows and piece meas 6 cm from cast-on, increasing 0 (1) st at end of last WS row = 110 (119) sts. Change to size 4 mm needles. Work chart for 72 rows and piece meas 26 cm from end of rib patt. Shape armholes: Bind off 3 sts at beg of next 4 rows, 2 sts at beg of next 14 rows, 1 st at beg of next 6 rows. At same time, when 14 (18) rows have been worked from beg of armhole shaping and armhole meas 5 (6) cm, shape neck as foll: Next row (RS): Bind off center 18 (19) sts. Working each side separately, bind off 3 sts at each neck edge 5 times and when 30 rows = 11 cm have been worked from beg of neck shaping, bind off rem 8 (12) sts for each shoulder.

Front: Work same as back.

Finishing: Pin pieces to measurements and block. Sew shoulder and side seams. Neck edging: With size 4 mm circular needle, pick up and k 192 sts evenly around neck edge. Join for working in rnds. Rnd 1 (bind-off rnd): K1tbl, sl st back to left needle, k2tog tbl, * sl st back to left needle, k2tog tbl; rep from * to end of rnd. Cut yarn and fasten off last st. Armhole edging: With size 4 mm circular needle, pick up and k 110 (114) sts evenly around armhole edge. Join for working in rnds. Work bind-off rnd same as for neck edging.

Chart

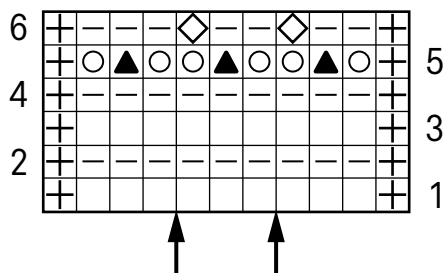
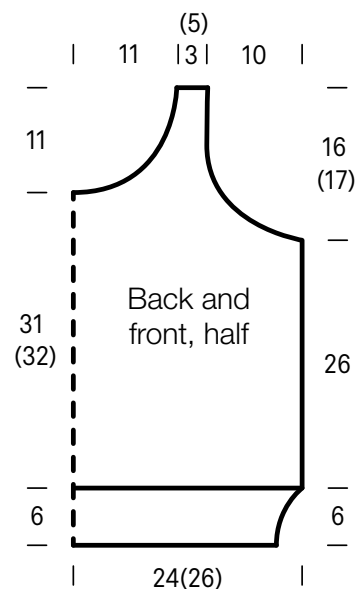


Chart key:

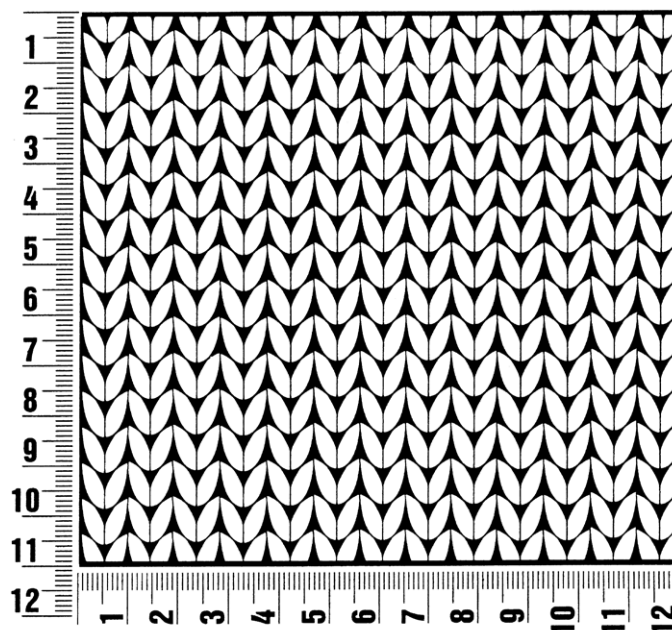
- ⊕ = selvage st
- = k1
- = = p1
- = yo
- ▲ = s2kp: sl 2 kwise, k1, pass slipped sts over knitted st
- ⊠ = p1tbl



Gauge Swatch

Before you begin ...

...make a gauge swatch. Use the recommended needles, yarns and pattern stitch for your gauge swatch. It should measure approx. 12 cm x 12 cm. Cast-on and bind-off rows, as well as selvage stitches should not be included in the measurement. Pin your swatch and block it as you would the finished pieces of the garment. Count stitches and rows over 10 cm. If your gauge swatch is too small, switch to larger needles. If your gauge swatch is too big, switch to smaller needles.



Abbreviations

beg = begin(ning) · **ch** = chain · **cont** = continue · **dec** = decreas(e)(ing) · **inc** = increas(e)(ing) · **k** = knit · **kwise** = as if to knit
meas = measures · **M1L** = lift strand between sts from front to back and knit this strand through the back loop · **M1R** = lift strand between sts from the back and knit this strand through the front loop · **patt** = pattern · **pm** = place marker · **p** = purl
pwise = as if to purl · **rem** = remain(ing) · **rep** = repeat(s) · **rev St st** = reverse stockinette stitch · **rnd(s)** = round(s) · **RS** = right side · **sc** = single crochet · **skp** = slip 1 stitch as if to knit, knit 1 stitch, pass slipped stitch over knitted stitch · **sk2p** = slip 1 stitch as if to knit, knit 2 together, pass slipped stitch over knitted stitch · **s2kp** = slip 2 stitches as if to knit, k 1 stitch, pass slipped stitches over knitted stitch · **sl** = slip · **st(s)** = stitch(es) · **St st** = stockinette stitch · **tbl** = through the back loop · **tog** = together · **wyib** = with yarn in back of work · **wyif** = with yarn in front of work · **WS** = wrong side · **yo(s)** = yarn over(s)

Publisher's Info

Publisher: Lana Grossa GmbH, Gaimersheim, www.lanagrossa.com

Photographer: Sarah Blais