



www.lanagrossa.com



PULLOVER · ABOUT BERLIN CHILLY

Design 01 from Lookbook 06

Photo: © Nicolas Olonetzky c/o Bascha Kicki Fotografen | www.bascha-kicki-photographers.de

PULLOVER · ABOUT BERLIN CHILLY

Design 01 from Lookbook 06



www.lanagrossa.com

Size 36/38 (42/44, 48/50)

Instructions are given for first size. Figures in parenthesis refer to larger sizes. When only one figure is given, it applies to all sizes.

Materials: 400 (450, 500) g of Lana Grossa **About Berlin Chilly** (100% linen; 95 m/50 g) in Dark Brown (col 8). Size 6.5 mm needles; size 5.5 mm circular needle, 40 cm long.

Rib patt: K2, p2.

Lace patt: Multiple of 11 + 2 selvage sts. Work according to chart. Numbers at right edge of chart indicate RS rows; on WS rows, p all sts and yos. Work to patt rep, work 11-st patt rep between arrows throughout, work to end of chart. Rep rows 1 – 66 throughout.

Gauge: 13.5 sts and 21 rows = 10 x 10 cm in lace patt on size 6.5 mm needles.

Back: With size 6.5 mm needles cast on 78 (90, 98) sts. Next row (WS): Selvage st, p1, * k2, p2; rep from * to last 4 sts, k2, p1, selvage st. Next row (RS): Selvage st, k1, * p2, k2; rep from * to last 4 sts, p2, k1, selvage st. Cont in rib patt as established until piece meas 5 cm from cast-on, inc 1 (0, 3) st(s) on last WS row = 79 (90, 101) sts. Work in lace patt according to chart until piece meas 51 (53, 55) cm from cast-on, ending with a WS row. Shape neck: Next row (RS): Bind off center 31 (30, 31) sts. Working each side separately, bind off 3 sts at each neck edge once, 2 sts once. At same time, when piece meas 1 (2, 3) cm from beg of neck shaping, shape shoulders as foll: At each shoulder edge, bind off 3 (5, 6) sts once, 4 (5, 6) sts 4 times. No sts rem.

Front: With size 6.5 mm needles cast on 78 (90, 98) sts. Next row (WS): Selvage st, p1, * k2, p2; rep from * to last 4 sts, k2, p1, selvage st. Next row (RS): Selvage st, k1, * p2, k2; rep from * to last 4 sts, p2, k1, selvage st. Cont in rib patt as established until piece meas 5 cm from cast-on, inc 1 (0, 3) st(s) on last WS row = 79 (90, 101) sts. Work in lace patt according to chart and shape curved hem with short-rows as foll: Next row (RS): Patt over 3 sts, turn. Next row (WS): Yo,

patt to end. Next row (RS): Patt over 6 sts, turn. Next row (WS): Yo, patt to end. Next row (RS): Patt over 10 sts, turn. Next row (WS): Yo, patt to end. Next row (RS): Patt over 15 sts, turn. Next row (WS): Yo, patt to end. Next row (RS): Patt to end of row. Always work yo tog with next st as ktog tbl. Next row (WS): Patt over 3 sts, turn. Next row (RS): Yo, patt to end. Next row (WS): Patt over 6 sts, turn. Next row (RS): Yo, patt to end. Next row (WS): Patt over 10 sts, turn. Next row (RS): Yo, patt to end. Next row (WS): Patt over 15 sts, turn. Next row (RS): Yo, patt to end. Next row (WS): Patt to end of row. Always work yo tog with next st as ptog tbl. Cont in patt across all sts until piece meas 49 (52, 55) cm from cast-on, ending with a WS row. Shape neck: Next row (RS): Bind off center 25 (24, 25) sts. Working each side separately, bind off 3 sts at each neck edge once, 2 sts twice, 1 st once and when same length as back to shoulders, shape shoulders same as for back. No sts rem.

Sleeves: With size 6.5 mm needles cast on 54 (66, 78) sts. Next row (WS): Selvage st, p1, * k2, p2; rep from * to last 4 sts, k2, p1, selvage st. Next row (RS): Selvage st, k1, * p2, k2; rep from * to last 4 sts, p2, k1, selvage st. Cont in rib patt as established until piece meas 5 cm from cast-on, inc 3 (2, 1) st(s) on last WS row = 57 (68, 79) sts. Work in lace patt according to chart until piece meas 36.5 (38.5, 40.5) cm from cast-on. Bind off all sts.

Finishing: Pin pieces to measurements and block. Sew shoulder seams. Neckband: With size 5.5 mm circular needle pick up and k 120 sts evenly around neck edge. Join for working in rnds. Work rib patt in rnds for 5 rnds. Dec rnd: * K2, p2, k2, p2tog; rep from * around = 105 sts. Next rnd: * K2, p2, k2, p1; rep from * around. Dec rnd: * K2, p2tog, k2, p1; rep from * around = 90 sts. Next rnd: * K2, p1; rep from * around. Rep last rnd until neckband meas 4 cm from pick-up rnd. Bind off all sts in rib. Place markers 20.5 (24.5, 28.5) cm down from shoulders on front and back. Sew on sleeves between markers. Sew side and sleeve seams.

PULLOVER · ABOUT BERLIN CHILLY

Design 01 from Lookbook 06



www.lanagrossa.com

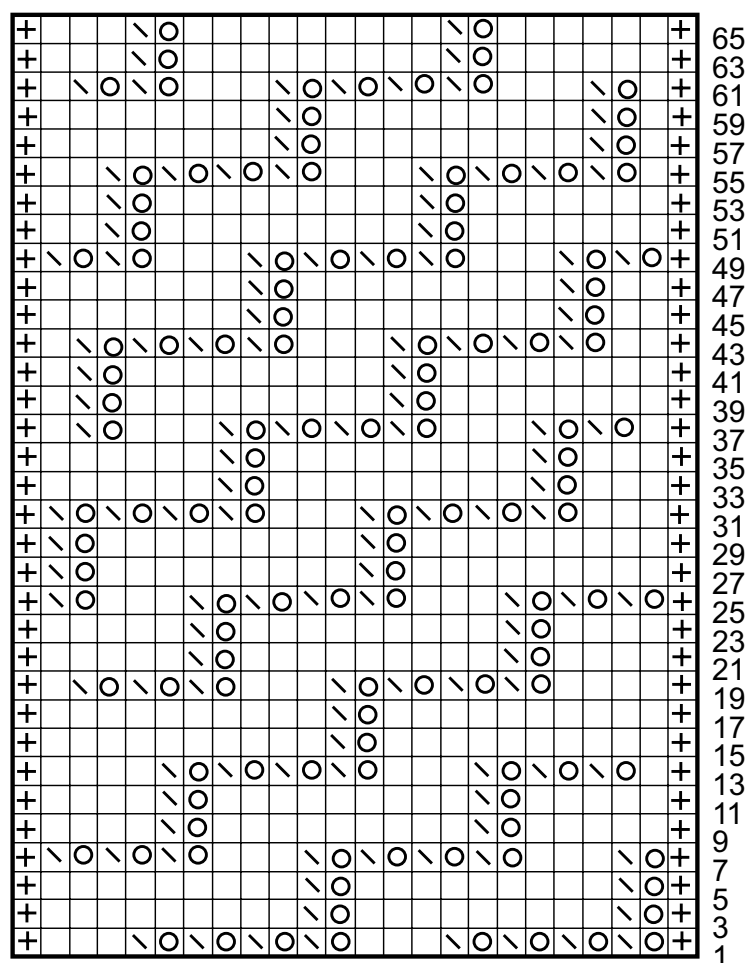
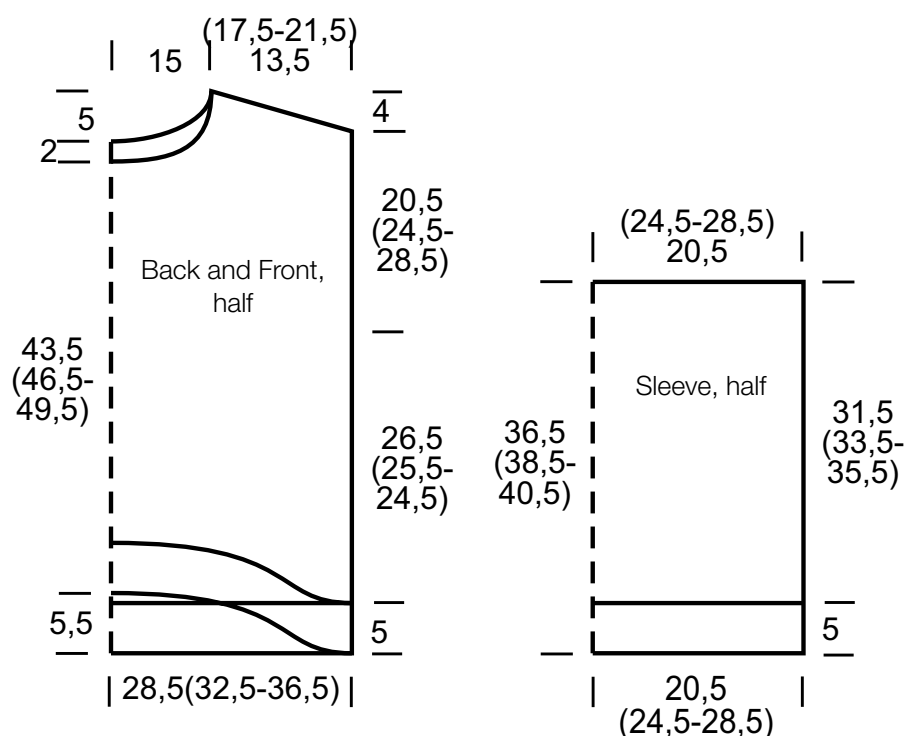


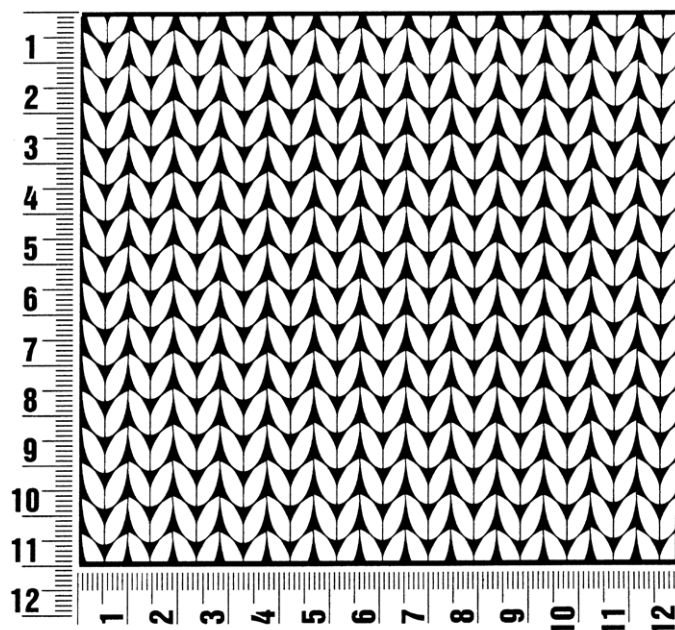
Chart key:

- ⊕ = selvage st
- = k1
- ⊗ = yo
- ⊞ = skp: sl 1 kwise, k1, pass slipped st over knitted st

Gauge Swatch

Before you begin ...

...make a gauge swatch. Use the recommended needles, yarns and pattern stitch for your gauge swatch. It should measure approx. 12 cm x 12 cm. Cast-on and bind-off rows, as well as selvage stitches should not be included in the measurement. Pin your swatch and block it as you would the finished pieces of the garment. Count stitches and rows over 10 cm. If your gauge swatch is too small, switch to larger needles. If your gauge swatch is too big, switch to smaller needles.



Abbreviations

beg = begin(ning) · **ch** = chain · **cont** = continue · **dec** = decreas(e)(ing) · **inc** = increas(e)(ing) · **k** = knit · **kwise** = as if to knit
meas = measures · **M1L** = lift strand between sts from front to back and knit this strand through the back loop · **M1R** = lift strand between sts from the back and knit this strand through the front loop · **patt** = pattern · **pm** = place marker · **p** = purl
pwise = as if to purl · **rem** = remain(ing) · **rep** = repeat(s) · **rev St st** = reverse stockinette stitch · **rnd(s)** = round(s) · **RS** = right side · **sc** = single crochet · **skp** = slip 1 stitch as if to knit, knit 1 stitch, pass slipped stitch over knitted stitch · **sk2p** = slip 1 stitch as if to knit, knit 2 together, pass slipped stitch over knitted stitch · **s2kp** = slip 2 stitches as if to knit, k 1 stitch, pass slipped stitches over knitted stitch · **sl** = slip · **st(s)** = stitch(es) · **St st** = stockinette stitch · **tbl** = through the back loop · **tog** = together · **wyib** = with yarn in back of work · **wyif** = with yarn in front of work · **WS** = wrong side · **yo(s)** = yarn over(s)

Publisher's Info

Publisher: Lana Grossa GmbH, Gaimersheim, www.lanagrossa.com
Photographer: Nicolas Olonetzky c/o Bascha Kicki Fotografen, www.bascha-photographers.de