



[www.lanagrossa.com](http://www.lanagrossa.com)

## **JACKET • ABOUT BERLIN FUNKY**

Design 15 – Filati Lookbook 08

# JACKET • ABOUT BERLIN FUNKY

## Design 15 – Filati Lookbook 08



**Size** 36/38 (40/42, 44)

Instructions are given for first size. Figures in parenthesis refer to larger sizes. When only one figure is given, it applies to all sizes.

**Materials:** 400 (450, 500) g of Lana Grossa **About Berlin Funky** (83% cotton, 17% polyamide; 115 m/50 g) in Beige (col 3). Size 4.5 and 5 mm needles.

**St st:** K on RS, p on WS.

**Rev St st:** P on RS, k on WS.

**Full-fashion decrease 1:** At beg of RS row, selvage st, k9, skp; at end of RS row, work to last 12 sts, k2tog, k9, selvage st.

**Full-fashion decrease 2:** At beg of RS row, selvage st, k2, skp (sk2p); at end of RS row, work to last 5 (6) sts, k2tog (k3tog), k2, selvage st - 1 (2) st(s) decreased at each edge.

**Full-fashion increase:** On RS row, M1R, 10 st in from edge.

**Gauge:** 18 sts and 24 rows = 10 x 10 cm in St st on size 5 mm needles.

**Back:** With size 4.5 mm needles cast on 102 (110, 118) sts. Work in rev St st for 4 rows. Change to size 5 mm needles. Work in St st and shape sides as foll: Working full-fashion dec 1, dec 1 st at each end of 9th row, then every 8th row 7 times = 86 (94, 102) sts. Work even until piece meas 33 cm from cast-on, ending with a WS row. Shape raglan: Working full-fashion dec 2, dec 1 st at each end of next 28 RS rows (2 sts at each end of next 2 RS rows, 1 st at each end of next 28 RS rows / 2 sts at each end of next 4 RS rows, 1 st at each end of next 28 RS rows) = 30 sts. Work even until piece meas 57 (58, 59) cm from cast-on. Bind off all sts.

**Left front:** With size 4.5 mm needles cast on 51 (55, 59) sts. Work in rev St st for 4 rows. Change to size 5 mm needles. Work in St st, work decs for side shaping at right edge same as for back = 43 (47, 51) sts. Work even until piece meas 29 (30, 31) cm from cast-on, ending with a WS row. Shape collar:

Next RS (inc) row: Work to last 10 sts, M1R, work to end = 44 (48, 52) sts. Cont in St st, rep full-fashion inc row every 8th row 8 times = 9 sts increased for shawl collar. **At same time**, when piece meas 33 cm from cast-on, shape raglan at right edge as foll: Working full-fashion dec 2, dec 1 st at beg of next 26 RS rows (2 sts at beg of next 2 RS rows, 1 st at beg of next 26 RS rows / 2 sts at beg of next 4 RS rows, 1 st at beg of next 26 RS rows) = 26 sts rem for collar. Cont across collar sts for 8 cm, ending with a WS row. Shape collar: Next RS (dec) row: Working full-fashion dec 2, dec 1 st at beg of next RS row, then every alt RS row 3 times = 22 sts. Work even until collar meas 16 cm in total length, ending with a WS row. Place sts on holder.

**Right front:** Work same as left front, reversing all shaping.

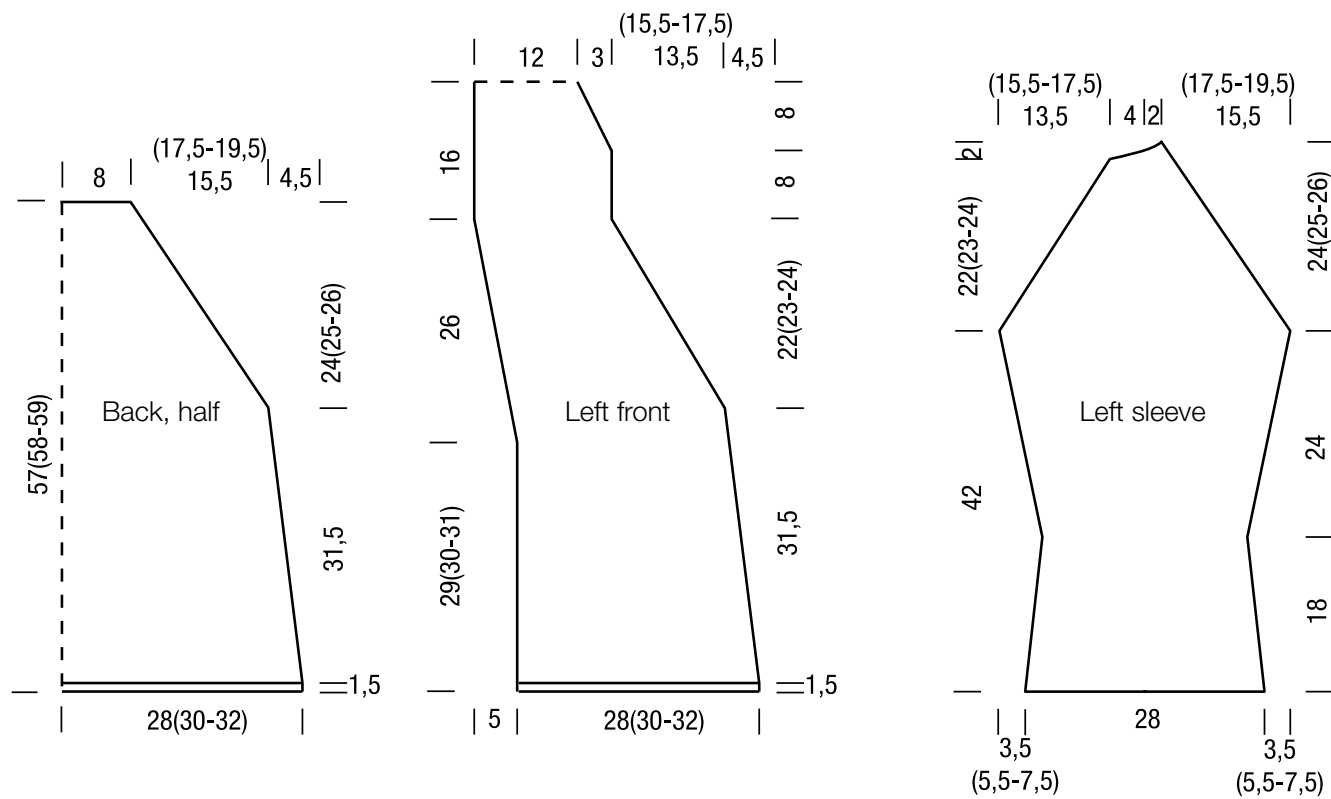
**Left sleeve:** With size 5 mm needles cast on 52 sts. Work in St st and shape sleeve as foll: Working full-fashion dec 1, dec 1 st at each end of 15th row, then every 6th row 3 times = 44 sts. Work even for 15 (13, 11) rows, ending with a WS row. Shape sleeve: Next RS (inc) row: Work in St st and working full-fashion inc, inc 1 st at each end of row = 46 sts. Cont in St st, rep inc row every 6th row 6 times (every 4th row 10 times / every alt 2nd and 4th row 14 times) = 58 (66, 74) sts. Work even until piece meas 42 cm from cast-on, ending with a WS row. Shape sleeve cap: Working full-fashion dec 2, dec 1 st at each end of next 26 RS rows (2 sts at each end of next 2 RS rows, 1 st at each end of next 26 RS rows / 2 sts at each end of next 4 RS rows, 1 st at each end of next 26 RS rows) = 6 sts. Work 1 WS row. Next row (RS): Dec 1 st at beg of row, work to end. Next row (WS): Bind off 2 sts, work to end. Next row (RS): Dec 1 st at beg of row, work to end. Next row (WS): Bind off rem 2 sts.

**Right sleeve:** Work same as left sleeve, reversing cap shaping.

**Finishing:** Pin pieces to measurements and block. Sew raglan seams. Join collar sts with 3-needle bind-off, then sew collar to back neck edge. Sew side and sleeve seams.

# JACKET • ABOUT BERLIN FUNKY

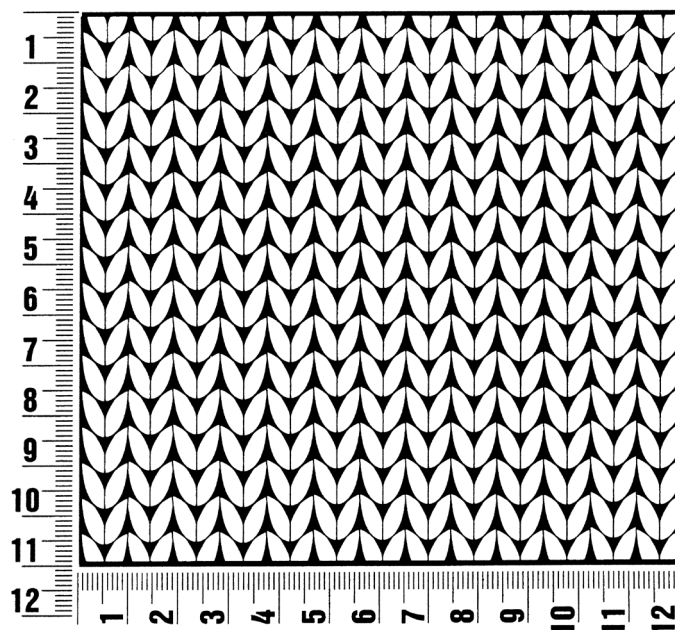
## Design 15 – Filati Lookbook 08



## Gauge Swatch

### Before you begin ...

...make a gauge swatch. Use the recommended needles, yarns and pattern stitch for your gauge swatch. It should measure approx. 12 cm x 12 cm. Cast-on and bind-off rows, as well as selvage stitches should not be included in the measurement. Pin your swatch and block it as you would the finished pieces of the garment. Count stitches and rows over 10 cm. If your gauge swatch is too small, switch to larger needles. If your gauge swatch is too big, switch to smaller needles.



## Abbreviations

**beg** = begin(ning) · **ch** = chain · **cont** = continue · **dec** = decreas(e)(ing) · **inc** = increas(e)(ing) · **k** = knit · **kwise** = as if to knit  
**meas** = measures · **M1L** = lift strand between sts from front to back and knit this strand through the back loop · **M1R** = lift strand between sts from the back and knit this strand through the front loop · **patt** = pattern · **pm** = place marker · **p** = purl  
**pwise** = as if to purl · **rem** = remain(ing) · **rep** = repeat(s) · **rev St st** = reverse stockinette stitch · **rnd(s)** = round(s) · **RS** = right side · **sc** = single crochet · **skp** = slip 1 stitch as if to knit, knit 1 stitch, pass slipped stitch over knitted stitch · **sk2p** = slip 1 stitch as if to knit, knit 2 together, pass slipped stitch over knitted stitch · **s2kp** = slip 2 stitches as if to knit, k 1 stitch, pass slipped stitches over knitted stitch · **sl** = slip · **st(s)** = stitch(es) · **St st** = stockinette stitch · **tbl** = through the back loop · **tog** = together · **wyib** = with yarn in back of work · **wyif** = with yarn in front of work · **WS** = wrong side · **yo(s)** = yarn over(s)

### Publisher's Info

**Publisher:** Lana Grossa GmbH, Gaimersheim, [www.lanagrossa.com](http://www.lanagrossa.com)

**Photographer:** Wilfried Wulff, [www.wilfriedwulff.com](http://www.wilfriedwulff.com)