



www.lanagrossa.com

PULLOVER · PIMA

Design 15 – About Berlin Special 03

PULLOVER • PIMA

Design 15 – About Berlin Special 03



Size 36/38 (40/42, 44/46)

Instructions are given for first size. Figures in parenthesis refer to larger sizes. When only one figure is given, it applies to all sizes.

Materials: 600 (650, 700) g of Lana Grossa **Pima** (100% Pima cotton; 125 m/50 g) in Yellow (**col 11**). Size 3 mm needles; size 3 mm circular needle, 40 cm long.

Main patt: Work according to chart. Multiple of 5 + 2 + 4 sel-vage sts. Number at right edge of chart indicates RS row, number at left edge of chart indicates WS row. Work to patt rep, work 5 sts between arrows for patt rep, work to end of chart. Rep rows 1 and 2.

Gauge: 25 sts and 30 rows = 10 x 10 cm in main patt on size 3 mm needles, measured unstretched.

Back: With size 3 mm needles cast on 156 (166, 176) sts. Next WS (set-up) row: P5, k1, * p4, k1; rep from * to last 5 sts, p5. Work in main patt according to chart for 31 cm, ending with a WS row. Shape armholes: Cont in main patt, inc 1 st at each end of [every alt RS row 1 time, then every foll RS row 1 time] 7 times, then every 6th row 1 time (every alt RS row 11 times, then every foll RS row 4 times / every alt RS row 13 times, then every foll RS row 2 times) = 186 (196, 206) sts. To inc, M1, 2 sts in from each edge. Work increased sts into main patt. Work 1 WS row. Shape shoulders and neck: At each

shoulder edge bind off 5 sts 13 (14, 15) times. At same time, when piece meas 4 (4.5, 5) cm from beg of shoulder shaping, shape neck as foll: Bind off center 32 sts. Working each side separately, bind off 2 sts at each neck edge 3 times, 2 sts 2 times, 1 st 2 times.

Front: Work same as back until piece meas 46 (48, 50) cm from cast-on, ending with a WS row. Shape neck and shoulders: Next row (RS): Bind off center 26 sts. Working each side separately, bind off 3 sts at each neck edge 2 times, 2 sts 2 times, 1 st 5 times and when same length as back to shoulders, shape shoulders same as for back.

Sleeves: With size 3 mm needles cast on 91 (96, 101) sts. Next WS (set-up) row: P5, k1, * p4, k1; rep from * to last 5 sts, p5. Work in main patt according to chart and shape sleeve as foll: Dec 1 st at each end of 20th row from cast-on, then every foll 20th row 4 times = 81 (86, 91) sts. To dec, k2tog, 2 sts in from each edge. Work even until piece meas 37 cm from cast-on. Bind off all sts.

Finishing: Sew shoulder seams. Neckband: With size 3 mm circular needle, pick up and k 132 sts evenly around neck edge. Place beg of rnd marker and join for working in rnds. K1, p1 around until band meas 3 cm from pick-up rnd. Bind-off rnd: * K2tog, sl st back to left needle; rep from * until all sts are bound-off. Sew on sleeves Sew side and sleeve seams.

PULLOVER · PIMA

Design 15 – About Berlin Special 03



Chart

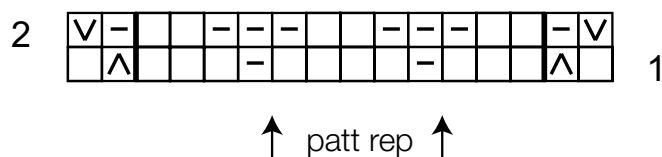


Chart key:

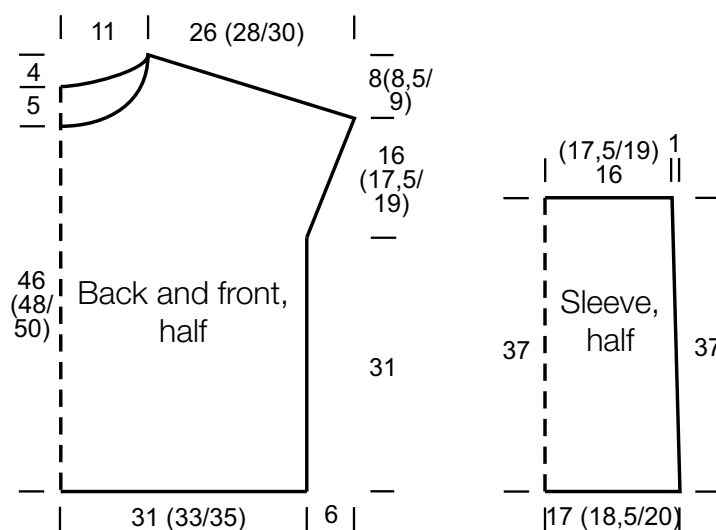
□ = k1 on RS, p1 on WS

▢ = p1 on RS, k1 on WS

⊙ = yo on RS, p1 on WS

^ = sl 1 pwise wyib

V = sl 1 pwise wyif



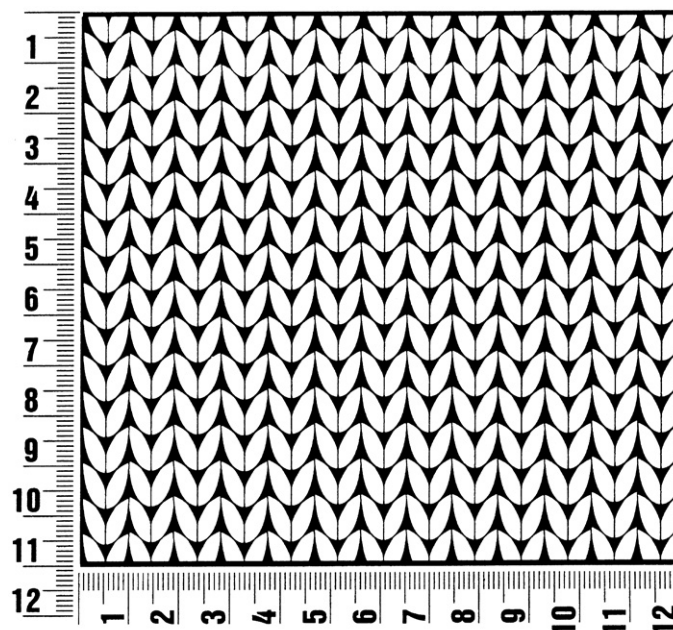
About Berlin Special 03

www.lanagrossa.com

Gauge Swatch

Before you begin ...

...make a gauge swatch. Use the recommended needles, yarns and pattern stitch for your gauge swatch. It should measure approx. 12 cm x 12 cm. Cast-on and bind-off rows, as well as selvage stitches should not be included in the measurement. Pin your swatch and block it as you would the finished pieces of the garment. Count stitches and rows over 10 cm. If your gauge swatch is too small, switch to larger needles. If your gauge swatch is too big, switch to smaller needles.



Abbreviations

beg = begin(ning) · **ch** = chain · **cont** = continue · **dec** = decreas(e)(ing) · **inc** = increas(e)(ing) · **k** = knit · **kwise** = as if to knit
meas = measures · **M1L** = lift strand between sts from front to back and knit this strand through the back loop · **M1R** = lift strand between sts from the back and knit this strand through the front loop · **patt** = pattern · **pm** = place marker · **p** = purl
pwise = as if to purl · **rem** = remain(ing) · **rep** = repeat(s) · **rev St st** = reverse stockinette stitch · **rnd(s)** = round(s) · **RS** = right side · **sc** = single crochet · **skp** = slip 1 stitch as if to knit, knit 1 stitch, pass slipped stitch over knitted stitch · **sk2p** = slip 1 stitch as if to knit, knit 2 together, pass slipped stitch over knitted stitch · **s2kp** = slip 2 stitches as if to knit, k 1 stitch, pass slipped stitches over knitted stitch · **sl** = slip · **st(s)** = stitch(es) · **St st** = stockinette stitch · **tbl** = through the back loop · **tog** = together · **wyib** = with yarn in back of work · **wyif** = with yarn in front of work · **WS** = wrong side · **yo(s)** = yarn over(s)

Publisher's Info

Publisher: Lana Grossa GmbH, Gaimersheim, www.lanagrossa.com

Photographer: Sascha Heintze