



www.lanagrossa.com

TOP · ABOUT BERLIN FUNKY
Design 16 – About Berlin Special 03

TOP · ABOUT BERLIN FUNKY

Design 16 – About Berlin Special 03



Size 36/38 (40/42, 44/46)

Instructions are given for first size. Figures in parenthesis refer to larger sizes. When only one figure is given, it applies to all sizes.

Materials: 200 (250, 300) g of Lana Grossa **About Berlin Funky** (83% cotton, 17% polyamide; 115 m/50 g) in White (col 1). Size 4 mm needles; one set size 4 mm double-pointed needles [dpns].

St st: K on RS, p on WS.

Selvage stitches: On RS row: Sl first st kwise, k last st. On WS row: Sl first st pwise, p last st.

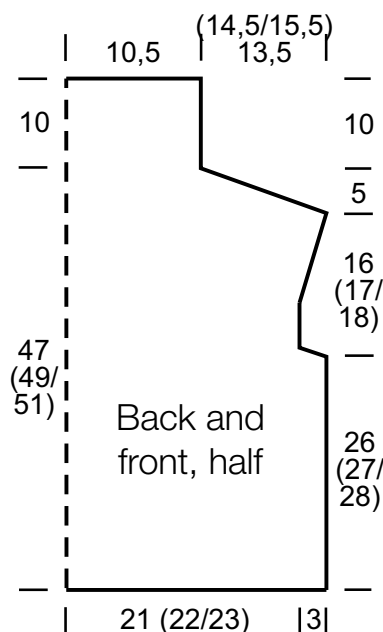
Gauge: 17.5 sts and 26 rows = 10 x 10 cm in St st on size 4 mm needles.

Back: With size 4 mm needles cast on 84 (88, 92) sts. Next row (WS): * K1, p1; rep from * to end. Work in St st until piece meas 26 (27, 28) cm from cast-on, ending with a WS row.

Shape armholes: Bind off 3 sts at beg of next 2 rows, 2 sts at beg of next 2 rows, 1 st at beg of next 2 rows = 72 (76, 80) sts. Work 14 (16, 18) rows even. Next RS (inc) row: Selvage st, M1R, work to last st, M1R, selvage st = 74 (78, 82) sts. Rep inc row every alt RS row 5 times = 84 (88, 92) sts. Work 1 WS row. Shape shoulders: At each shoulder edge bind off 4 sts 6 times (4 sts 4 times, 5 sts 2 times / 5 sts 4 times, 4 sts 2 times) = 36 sts rem for collar. Place sts on holder.

Front: Work same as back until first 4 rows of shoulder shaping have been worked. Cont shoulder shaping same as for back and at same time, shape neck as foll: Next row (RS): Bind off center 18 sts. Working each side separately, bind off 4 sts at each neck edge 1 time, 3 sts 1 time, 2 sts 1 time.

Finishing: Sew shoulder seams. **Collar:** With size 4 mm dpns, pick up and k 66 sts around neck edge, including sts on back neck holder. Place beg of rnd marker and join for working in rnds. Work in St st (k every rnd) for 10 cm. Bind off all sts in k1/p1 rib. Sew side seams.



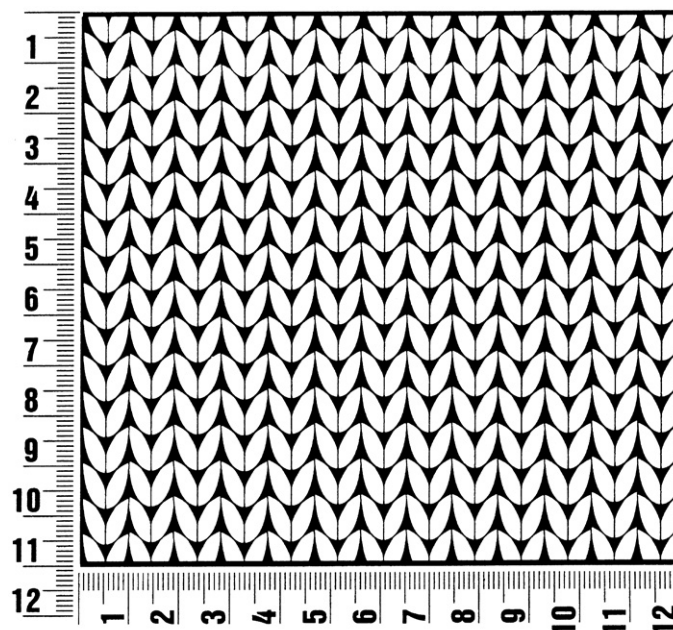
About Berlin Special 03

www.lanagrossa.com

Gauge Swatch

Before you begin ...

...make a gauge swatch. Use the recommended needles, yarns and pattern stitch for your gauge swatch. It should measure approx. 12 cm x 12 cm. Cast-on and bind-off rows, as well as selvage stitches should not be included in the measurement. Pin your swatch and block it as you would the finished pieces of the garment. Count stitches and rows over 10 cm. If your gauge swatch is too small, switch to larger needles. If your gauge swatch is too big, switch to smaller needles.



Abbreviations

beg = begin(ning) · **ch** = chain · **cont** = continue · **dec** = decreas(e)(ing) · **inc** = increas(e)(ing) · **k** = knit · **kwise** = as if to knit
meas = measures · **M1L** = lift strand between sts from front to back and knit this strand through the back loop · **M1R** = lift strand between sts from the back and knit this strand through the front loop · **patt** = pattern · **pm** = place marker · **p** = purl
pwise = as if to purl · **rem** = remain(ing) · **rep** = repeat(s) · **rev St st** = reverse stockinette stitch · **rnd(s)** = round(s) · **RS** = right side · **sc** = single crochet · **skp** = slip 1 stitch as if to knit, knit 1 stitch, pass slipped stitch over knitted stitch · **sk2p** = slip 1 stitch as if to knit, knit 2 together, pass slipped stitch over knitted stitch · **s2kp** = slip 2 stitches as if to knit, k 1 stitch, pass slipped stitches over knitted stitch · **sl** = slip · **st(s)** = stitch(es) · **St st** = stockinette stitch · **tbl** = through the back loop · **tog** = together · **wyib** = with yarn in back of work · **wyif** = with yarn in front of work · **WS** = wrong side · **yo(s)** = yarn over(s)

Publisher's Info

Publisher: Lana Grossa GmbH, Gaimersheim, www.lanagrossa.com

Photographer: Sascha Heintze