



[www.lanagrossa.com](http://www.lanagrossa.com)



## JACKET · PIMA

Design 18 – About Berlin Special 03

# JACKET • PIMA

## Design 18 – About Berlin Special 03



**Size** 36/38 (40/42, 44/46)

Instructions are given for first size. Figures in parenthesis refer to larger sizes. When only one figure is given, it applies to all sizes.

**Materials:** 450 (500, 550) g of Lana Grossa **Pima** (100% Pima cotton; 125 m/50 g) in Ecru (**col 22**). Size 2.5 and 3.5 mm needles; size 2.5 mm circular needle; four 20 mm mother-of-pearl buttons.

**Rib patt:** On RS row, k1tbl, p1; on WS row, k1, p1tbl.

**Selvage stitches:** On every row: Sl first st kwise, k last st.

**Diamond lace:** Work according to charts. Numbers at right edge of charts indicate RS rows; on WS rows, work sts as they appear, purl all yos. Work to patt rep, work 16 sts between arrows for patt rep, work to end of chart. Rep rows 1 – 32 for diamond lace.

**Gauge:** 18 sts and 28 rows = 10 x 10 cm in diamond lace on size 3.5 mm needles.

**Back:** With size 2.5 mm needles cast on 99 (107, 115) sts. Next row (WS): \* P1tbl, k1; rep from \*, end p1tbl. Cont in rib patt as established until piece meas 4 cm from cast-on, ending with a WS row. Change to size 3.5 mm needles. Follow diamond lace chart for back for 86 rows and piece meas 34 cm from cast-on. Shape armholes: Bind off 2 sts at beg of next 2 rows, 1 st at beg of next 4 rows = 91 (99, 107) sts. Work even until a total of 54 (58, 62) rows has been worked from beg of armhole shaping and armhole meas 19 (20, 21) cm. Shape shoulders and neck: At each shoulder edge bind off 5 sts 5 times (5 sts 1 time, 6 sts 4 times / 6 sts 2 times, 7 sts 3 times). At same time, when piece meas 1.5 cm from beg of shoulder shaping, shape neck as foll: Bind off center 31 sts. Working each side separately, bind off 3 sts at each neck edge 1 time, 2 sts 1 time.

**Left front:** With size 2.5 mm needles cast on 48 (52, 56) sts. Next row (WS): \* P1tbl, k1; rep from \*, end p1tbl. Cont in rib patt as established until piece meas 4 cm from cast-on, ending with a WS row. Change to size 3.5 mm needles. Follow diamond lace chart for left front for 64 rows and piece meas 27 cm from cast-on. Shape neck: Dec 1 st at end of next RS row, then every alt RS row 18 times. To dec, k2tog, 1 st in from edge. At same time, when same length as back to armhole, shape armhole at right edge same as for back when same length as back to shoulders, shape shoulder at right edge same as for back.

**Right front:** Work same as left front, reversing all shaping and patt placement.

**Sleeves:** With size 2.5 mm needles cast on 49 sts. Next row (WS): \* P1tbl, k1; rep from \*, end p1tbl. Cont in rib patt as established until piece meas 8 cm from cast-on, inc 1 st at end of last WS row = 50 sts. Change to size 3.5 mm needles. Next row (RS): Selvage st, work 16-st patt rep of diamond lace 3 times, end selvage st. Cont in patt and shape sleeve as foll: Inc 1 st at each end of 21st (11, 5)th row worked in patt, then every 10 (10, 8)th row 8 (10, 12) times = 68 (72, 76) sts. To inc, M1, 1 st in from each edge. Work increased sts into patt. Work even until piece meas 48 cm from cast-on, ending with a WS row. Shape sleeve cap: Bind off 2 sts at beg of next 2 rows, 1 st at beg of next 30 rows, 2 sts at beg of next 4 rows, 3 sts at beg of next 2 rows. Bind off rem 20 (24, 28) sts.

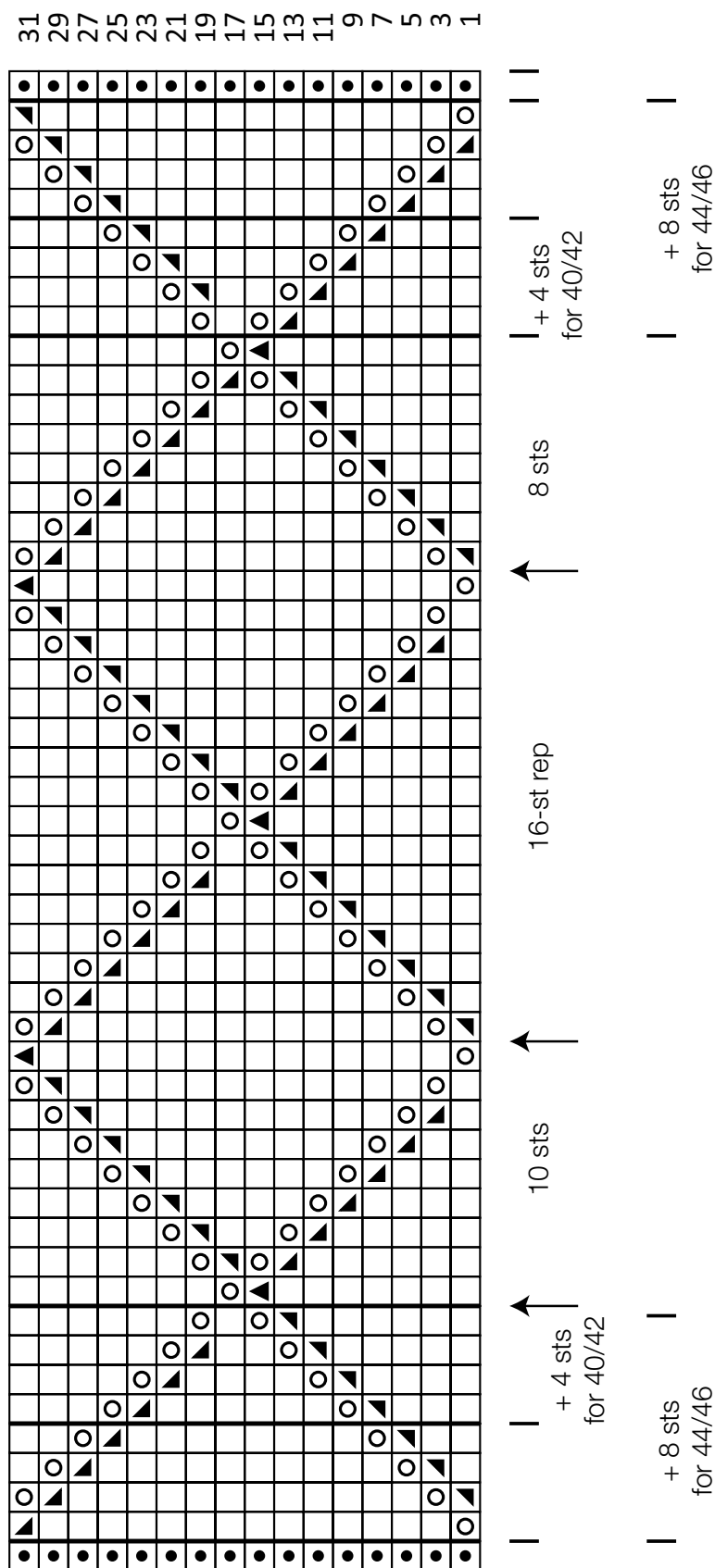
**Finishing:** Sew shoulder seams. Front and neckband: With size 2.5 mm circular needle, RS facing and beg at cast-on edge of right front, pick up and k 76 sts evenly along straight edge and 88 (92, 96) sts along shaped edge of right front, 51 sts along back neck, 88 (92, 96) sts along shaped edge and 76 sts along straight edge of left front = 379 (387, 395) sts. Next row (WS): \* P1tbl, k1; rep from \*, end p1tbl. Work in rib patt as established for 2 more rows. Next RS (buttonhole) row: Work in rib patt and sk2p 3rd – 5th st, 25th – 27th st, 47th – 49th st and 69th – 71st st. Next row (WS): Work in rib patt, cast on 2 sts over each dbl decrease. Work 2 more rows in rib patt, then bind off all sts on next RS row. Sew in sleeves. Sew side and sleeve seams. Sew on buttons.

# JACKET · PIMA

## Design 18 – About Berlin Special 03



### Diamond lace chart for back



#### Chart key:

- = k1 on RS, p1 on WS
- = yo on RS, p1 on WS
- ▴ = k2tog
- ▾ = skp: sl 1 kwise, k1, pass slipped st over knitted st
- ▴ = sk2p: sl 1 kwise, k2tog, pass slipped st over knitted st
- = selvage st

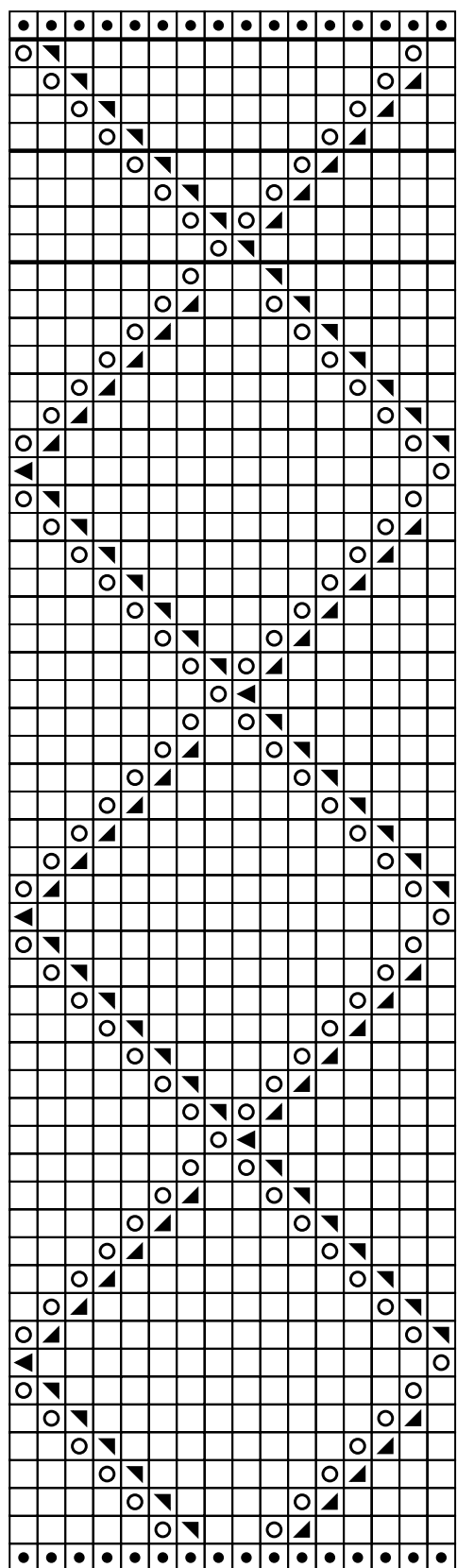
# JACKET · PIMA

## Design 18 – About Berlin Special 03



### Diamond lace chart for left front

31 29 27 25 23 21 19 17 15 13 11 9 7 5 3 1

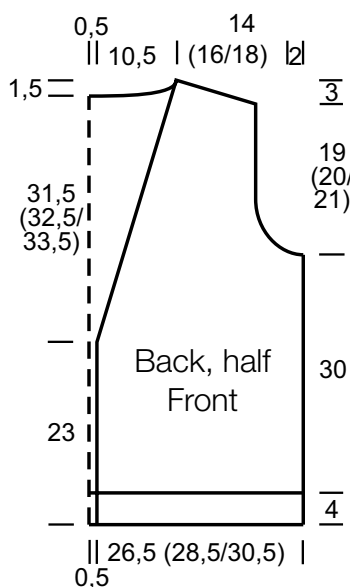


Front edge



+ 4 sts  
for 40/42

+ 8 sts  
for 44/46





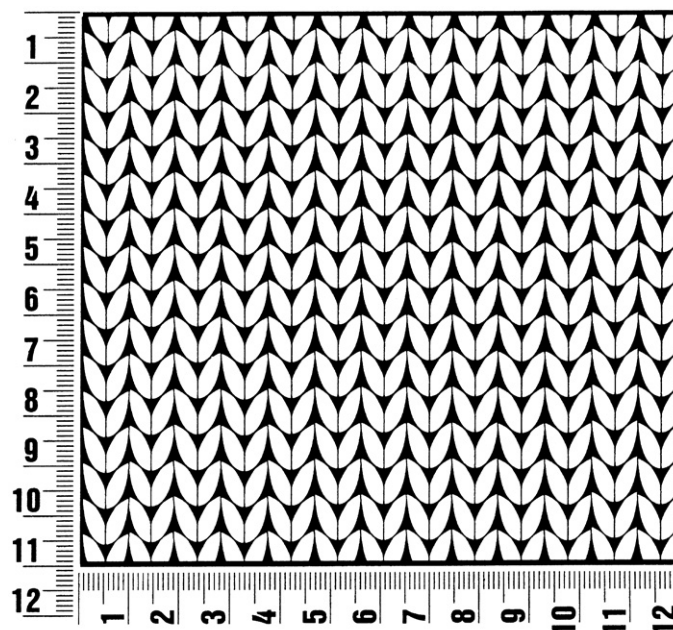
# About Berlin Special 03

www.lanagrossa.com

## Gauge Swatch

### Before you begin ...

...make a gauge swatch. Use the recommended needles, yarns and pattern stitch for your gauge swatch. It should measure approx. 12 cm x 12 cm. Cast-on and bind-off rows, as well as selvage stitches should not be included in the measurement. Pin your swatch and block it as you would the finished pieces of the garment. Count stitches and rows over 10 cm. If your gauge swatch is too small, switch to larger needles. If your gauge swatch is too big, switch to smaller needles.



## Abbreviations

**beg** = begin(ning) · **ch** = chain · **cont** = continue · **dec** = decreas(e)(ing) · **inc** = increas(e)(ing) · **k** = knit · **kwise** = as if to knit  
**meas** = measures · **M1L** = lift strand between sts from front to back and knit this strand through the back loop · **M1R** = lift strand between sts from the back and knit this strand through the front loop · **patt** = pattern · **pm** = place marker · **p** = purl  
**pwise** = as if to purl · **rem** = remain(ing) · **rep** = repeat(s) · **rev St st** = reverse stockinette stitch · **rnd(s)** = round(s) · **RS** = right side · **sc** = single crochet · **skp** = slip 1 stitch as if to knit, knit 1 stitch, pass slipped stitch over knitted stitch · **sk2p** = slip 1 stitch as if to knit, knit 2 together, pass slipped stitch over knitted stitch · **s2kp** = slip 2 stitches as if to knit, k 1 stitch, pass slipped stitches over knitted stitch · **sl** = slip · **st(s)** = stitch(es) · **St st** = stockinette stitch · **tbl** = through the back loop · **tog** = together · **wyib** = with yarn in back of work · **wyif** = with yarn in front of work · **WS** = wrong side · **yo(s)** = yarn over(s)

### Publisher's Info

**Publisher:** Lana Grossa GmbH, Gaimersheim, [www.lanagrossa.com](http://www.lanagrossa.com)

**Photographer:** Sascha Heintze