



www.lanagrossa.com

JACKET • RISERVA

Design 41 – Filati Journal 61

JACKET • RISERVA

Design 41 – Filati Journal 61



Size One size

Materials: **300 g each** of Lana Grossa **Riserva** (70% organic cotton, 30% recycled polyamide; 125 m/50 g) in Ecu (col 2), Petrol (col 7) and Yellow (col 17). Size 5 mm crochet hook.

Crochet patt: Work according to chart. Numbers at right edge of chart indicate RS rows, numbers at left edge of chart indicate WS rows. Bold numbers at right edge of chart indicate col used. Work to patt rep, work 1 st between arrows for patt rep, work to end of chart. Work rows 1 – 8 once, then rep rows 3 – 8.

Decreasing 1 st (2 sts): [Work next st to 2nd to last step] 2 (3) times. Wrap yarn over hook and draw through all loops on hook.

Increasing 1 st: Work 2 sts in 1 st on row below.

Gauge: 17 sts and 12.5 rows = 10 x 10 cm in crochet patt with size 5 mm hook.

Back: With Ecu, ch 104. Work 1 row sl st in back of foundation row. Work chart for 62 rows = 51 cm. Shape armholes: Dec 2 sts at each end of next 3 rows, 1 st at each end of next row = 90 sts. Work decs 2 sts in from each edge. Work even until 26 rows have been worked from beg of armhole shaping and armhole meas 21 cm. Shape neck: Leave center 24 sts unworked = 33 sts rem for each side. Working each side separately, work even for 2 rows = 1.5 cm. Fasten off.

Left front: With Ecu, ch 54. Work 1 row sl st in back of foundation row. Work chart for 42 rows = 33.5 cm. Shape neck: Dec 1 st at neck edge on next row, then every 6th row 6 times. Work decs 7 sts in from neck edge. At same time, when same length as back to armhole, shape armhole at right edge same as for back and when same length as back to shoulder, leave 33 shoulder sts unworked and cont in patt across rem 7 sts for front band for 8 rows = 7 cm. Fasten off.

Right front: Work same as left front, reversing all shaping.

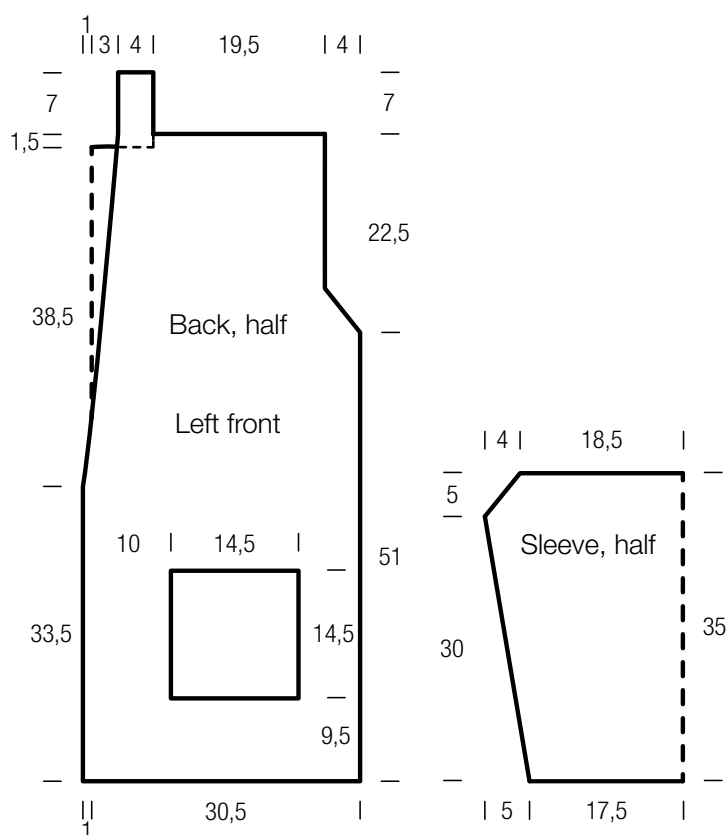
Sleeves: With Ecu, ch 60. Work 1 row sl st in back of foundation row. Work chart and shape sleeve as foll: Inc 1 st at each end of 5th row, then every 4th row 6 times, then every 4th row 1 time = 76 sts. Work even until chart has been worked for a total of 38 rows = 30 cm. Shape sleeve cap: Dec 2 sts at each end of next row, 1 st at each end of next 5 rows. Fasten off.

Pockets: Make 2. With Ecu, ch 25. Work 1 row sl st in back of foundation row. Work chart for 18 rows = 14.5 cm. Fasten off. With Petrol, work 1 row sc along each side edge.

Finishing: Pin pieces to measurements and block. Sew shoulder seams. Sew front bands tog, then sew front band to back neck edge. With Petrol, work 1 row sc along right front, back neck and left front edge. Referring to schematic, sew pockets to fronts. Sew in sleeves. Sew side and sleeve seams.

JACKET • RISERVA

Design 41 – Filati Journal 61



Chart

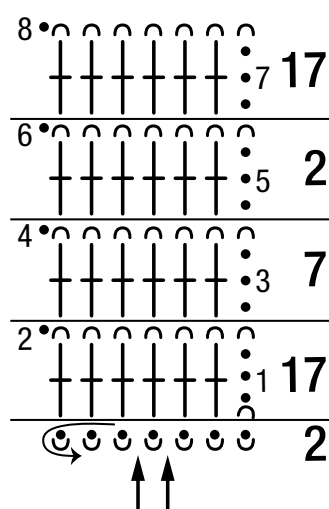


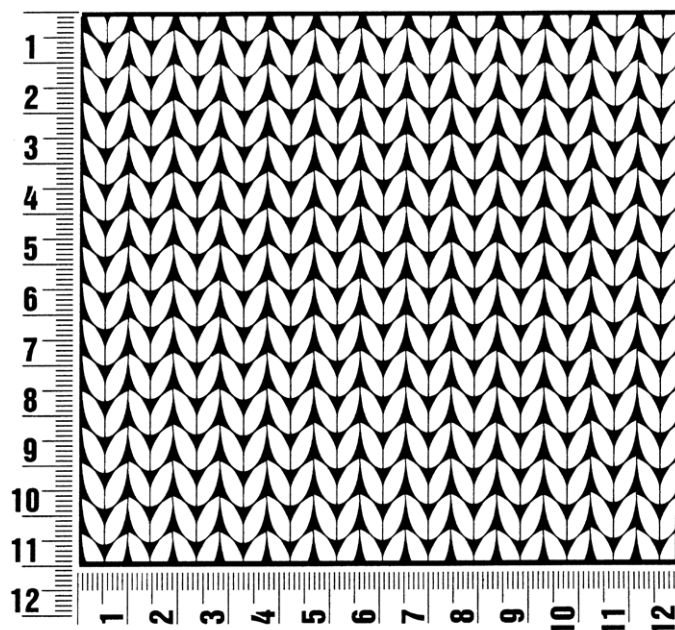
Chart key:

- = chain (ch)
- ∩ = slip stitch (sl st)
- ⊥ = double crochet (dc)

Gauge Swatch

Before you begin ...

...make a gauge swatch. Use the recommended needles, yarns and pattern stitch for your gauge swatch. It should measure approx. 12 cm x 12 cm. Cast-on and bind-off rows, as well as selvage stitches should not be included in the measurement. Pin your swatch and block it as you would the finished pieces of the garment. Count stitches and rows over 10 cm. If your gauge swatch is too small, switch to larger needles. If your gauge swatch is too big, switch to smaller needles.



Abbreviations

beg = begin(ning) · **ch** = chain · **cont** = continue · **dec** = decreas(e)(ing) · **inc** = increas(e)(ing) · **k** = knit · **kwise** = as if to knit
meas = measures · **M1L** = lift strand between sts from front to back and knit this strand through the back loop · **M1R** = lift strand between sts from the back and knit this strand through the front loop · **patt** = pattern · **pm** = place marker · **p** = purl
pwise = as if to purl · **rem** = remain(ing) · **rep** = repeat(s) · **rev St st** = reverse stockinette stitch · **rnd(s)** = round(s) · **RS** = right side · **sc** = single crochet · **skp** = slip 1 stitch as if to knit, knit 1 stitch, pass slipped stitch over knitted stitch · **sk2p** = slip 1 stitch as if to knit, knit 2 together, pass slipped stitch over knitted stitch · **s2kp** = slip 2 stitches as if to knit, k 1 stitch, pass slipped stitches over knitted stitch · **sl** = slip · **st(s)** = stitch(es) · **St st** = stockinette stitch · **tbl** = through the back loop · **tog** = together · **wyib** = with yarn in back of work · **wyif** = with yarn in front of work · **WS** = wrong side · **yo(s)** = yarn over(s)

Publisher's Info

Publisher: Lana Grossa GmbH, Gaimersheim, www.lanagrossa.com

Photographer: Nicolas Olonetzky, www.olonetzky.com