



[www.lana-grossa.com](http://www.lana-grossa.com)

## TOP · ALESSIA

Design 10 – Filati Journal 63



**Size** 36/38 (40/42, 44/46)

Instructions are given for first size. Figures in parenthesis refer to larger sizes. When only one figure is given, it applies to all sizes.

**Materials:** 200 (250, 250) g of Lana Grossa **Alessia** (76% cotton, 20% recycled polyester, 4% polyester; 135 m/50 g) in Ice Blue/Pale Purple/Natural (**col 20**). Size 3.5 and 6 mm needles; size 5 mm crochet hook.

**Selvage stitches:** On every row: Sl first st kwise, k last st.

**Garter st:** K every row.

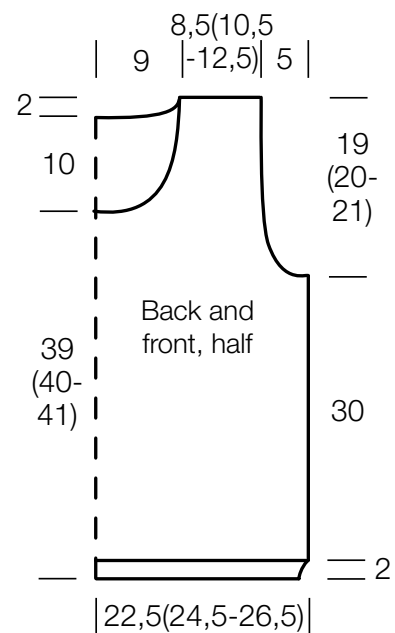
**St st:** K on RS, p on WS.

**Gauge:** 20 sts and 25 rows = 10 x 10 cm in St st on size 6 mm needles.

**Back:** With size 3.5 mm needles cast on 90 (98, 106) sts. Beg and end with a WS row and working first and last st as selvage sts, work in garter st for 2 cm. Change to size 6 mm needles. Maintaining selvage sts, work in St st for 30 cm, ending with a WS row. Shape armholes: Bind off 4 sts at beg of next 2 rows, 2 sts at beg of next 4 rows, 1 st at beg of next 4 rows = 70 (78, 86) sts. Cont until armhole meas 17 (18, 19) cm, ending with a WS row. Shape neck: Next row (RS): Bind off center 20 sts. Working each side separately, bind off 4 sts at each neck edge 2 times and when piece meas 2 cm from beg of neck shaping, bind off rem 17 (21, 25) sts for each shoulder.

**Front:** Work same as back until armhole meas 7 (8, 9) cm, ending with a WS row. Shape neck: Next row (RS): Bind off center 16 sts. Working each side separately, bind off 3 sts at each neck edge 1 time, 2 sts 2 times, 1 st 3 times and when same length as back to shoulders, bind off rem 17 (21, 25) sts for each shoulder.

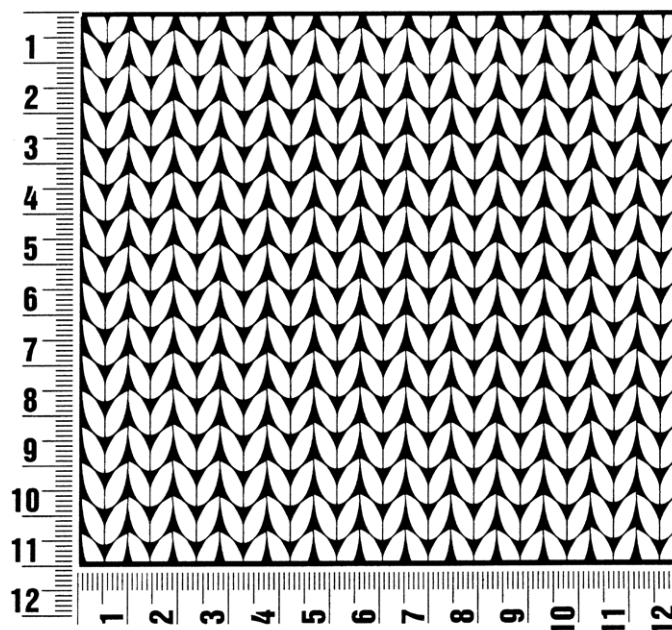
**Finishing:** Pin pieces to measurements and block. Sew shoulder and side seams. Using crochet hook, sl st around neck edge and around each armhole edge.



## Gauge Swatch

### Before you begin ...

...make a gauge swatch. Use the recommended needles, yarns and pattern stitch for your gauge swatch. It should measure approx. 12 cm x 12 cm. Cast-on and bind-off rows, as well as selvage stitches should not be included in the measurement. Pin your swatch and block it as you would the finished pieces of the garment. Count stitches and rows over 10 cm. If your gauge swatch is too small, switch to larger needles. If your gauge swatch is too big, switch to smaller needles.



## Abbreviations

**beg** = begin(ning) · **ch** = chain · **cont** = continue · **dec** = decreas(e)(ing) · **inc** = increas(e)(ing) · **k** = knit · **kwise** = as if to knit  
**meas** = measures · **M1L** = lift strand between sts from front to back and knit this strand through the back loop · **M1R** = lift strand between sts from the back and knit this strand through the front loop · **patt** = pattern · **pm** = place marker · **p** = purl  
**pwise** = as if to purl · **rem** = remain(ing) · **rep** = repeat(s) · **rev St st** = reverse stockinette stitch · **rnd(s)** = round(s) · **RS** = right side · **sc** = single crochet · **skp** = slip 1 stitch as if to knit, knit 1 stitch, pass slipped stitch over knitted stitch · **sk2p** = slip 1 stitch as if to knit, knit 2 together, pass slipped stitch over knitted stitch · **s2kp** = slip 2 stitches as if to knit, k 1 stitch, pass slipped stitches over knitted stitch · **sl** = slip · **st(s)** = stitch(es) · **St st** = stockinette stitch · **tbl** = through the back loop · **tog** = together · **wyib** = with yarn in back of work · **wyif** = with yarn in front of work · **WS** = wrong side · **yo(s)** = yarn over(s)

### Publisher's Info

**Publisher:** Lana Grossa GmbH, Gaimersheim, [www.lana-grossa.com](http://www.lana-grossa.com)

**Photographer:** Yannik Schütte