

LANA GROSSA



© Lana Grossa GmbH - Photo: Wilfried Wulff, www.wilfriedwulff.com

Design 01 – Classici 22

CARDIGAN
CARA · BRIGITTE NO. 4

CARDIGAN · CARA · BRIGITTE NO. 4

Design 01 – Classici 22



Size 36/38 (40/42, 44)

Instructions are given for first size. Figures in parenthesis refer to larger sizes. When only one figure is given, it applies to all sizes.

Materials: **350 (400, 450) g** of Lana Grossa **Cara** (57% baby alpaca, 33% cotton, 10% Merino wool) in Pale Yellow (**col 1**) and **200 (250, 300) g** in Black/Natural (**col 16**); **200 (250, 300) g** of Lana Grossa **Brigitte No. 4** (80% cotton, 20% baby alpaca; 110 m/50 g) in Black (**col 26**). Size 3.5 and 4 mm needles; size 3.5 mm circular needle, 120 cm long.

Rib patt: K1, p1.

Half-brioche rib: Work according to chart. Multiple of 2 + 1 + 2 selvage sts. NOTE: Selvage sts are not included on chart. Numbers at left edge of chart indicate WS rows, number at right edge of chart indicates RS row. Work rows 1 – 3 once, then rep rows 2 and 3. **Note:** 1 stitch and 1 yo are treated as 1 stitch.

Stripe patt 1: 12 rows Black, 12 rows Pale Yellow, 4 rows Black, 24 rows Pale Yellow, 48 rows Black/Natural, 4 rows Black, 26 rows Pale Yellow, 4 rows Black, 14 rows Pale Yellow, 8 rows Black, 20 rows Pale Yellow, [2 rows Black, 6 rows Pale Yellow] 3 times, 8 rows Black, rem rows Pale Yellow.

Stripe patt 2: 52 rows Black/Natural, 4 rows Black, 26 rows Pale Yellow, 10 rows Black, 16 rows Pale Yellow, [2 rows Black, 6 rows Pale Yellow] 2 times, 2 rows Black, 10 rows Pale Yellow, 8 rows Black, rem rows Pale Yellow.

Selvage sts: On every row: Knit first and last st.

Gauge: 21 sts and 38 rows = 10 x 10 cm in half-brioche rib on size 4 mm needles.

Back: With size 3.5 mm needles and Black cast on 127 (135, 143) sts. Next row (WS): Selvage st, * k1, p1; rep from * to last 2 sts, k1, selvage st. Work in rib patt as set by last row until piece meas 4 cm from cast-on, ending with a WS row. Change to size 4 mm needles. Repeating chart rows 2 and 3 throughout, work in half-brioche rib according to chart and stripe patt 1 until piece meas 37 cm from cast-on. Place marker in first and last st on last WS row to indicate beg of armholes. Cont in patt until piece meas 18 (19, 20) cm from armhole markers, ending with a WS row. Shape shoulders and neck: At each shoulder edge bind off 5 sts 6 times, 4 sts 4 times (5 sts 10 times / 5 sts 6 times, 6 sts 4 times). At same time, when piece meas 58 (59,

60) cm from cast-on, shape neck as foll: Next row (RS): Bind off center 27 sts. Working each side separately, bind off 1 st at each neck edge 4 times. No sts rem.

Left front: With size 3.5 mm needles and Black cast on 59 (63, 67) sts. Next row (WS): Selvage st, * k1, p1; rep from * to last 2 sts, k1, selvage st. Work in rib patt as set by last row until piece meas 4 cm from cast-on, ending with a WS row. Change to size 4 mm needles. Repeating chart rows 2 and 3 throughout, work in half-brioche rib according to chart and stripe patt 1 until piece meas 26 (27, 28) cm from cast-on, ending with a WS row. Shape neck: Dec 1 st at end of next RS row, then every 10th row 12 times. At same time, when same length as back to armhole, place armhole marker at right edge and when same length as back to shoulder, shape shoulder at right edge same as for back. No sts rem.

Right front: Work same as left front, reversing all shaping.

Sleeves: With size 3.5 mm needles and Black cast on 67 sts. Next row (WS): Selvage st, * k1, p1; rep from * to last 2 sts, k1, selvage st. Work in rib patt as set by last row until piece meas 4 cm from cast-on, ending with a WS row. Change to size 4 mm needles. Repeating chart rows 2 and 3 throughout, work in half-brioche rib according to chart, foll stripe patt 2 and shape sleeve as foll: Inc 1 st at each end of 23rd (19, 15) th row, then every 22nd row 5 times (then every alt 16th and 18th row 7 times / then every 14th row 9 times) = 79 (83, 87) sts. Work increased sts into patt. Work even in patt until piece meas 44 cm from cast-on. Bind off all sts.

Finishing: Pin pieces to measurements and block. Sew shoulder seams. **Front and neckband:** With size 3.5 mm circular needle and Black/Natural, pick up and k 64 (66, 68) sts along straight edge and 83 sts along shaped edge of right front, 39 sts along back neck, 83 sts along shaped edge and 64 (66, 68) sts along straight edge of left front = 333 (337, 341) sts. Next row (WS): Selvage st, * k1, p1; rep from * to last 2 sts, k1, selvage st. Work in rib patt as set by last row until band meas 4 cm from pick-up row. Bind off all sts in rib. Sew on sleeves between markers. Sew side and sleeve seams.

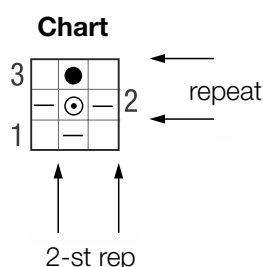
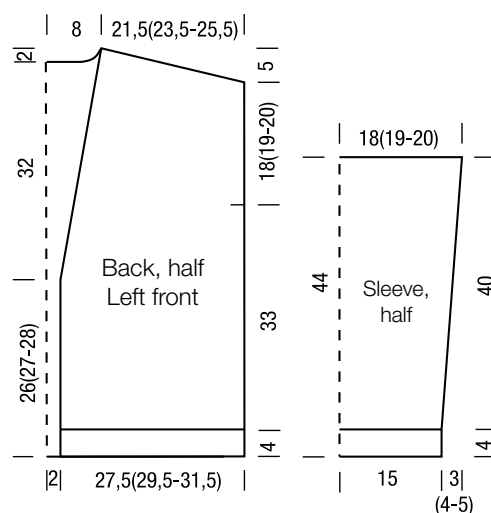


Chart key:

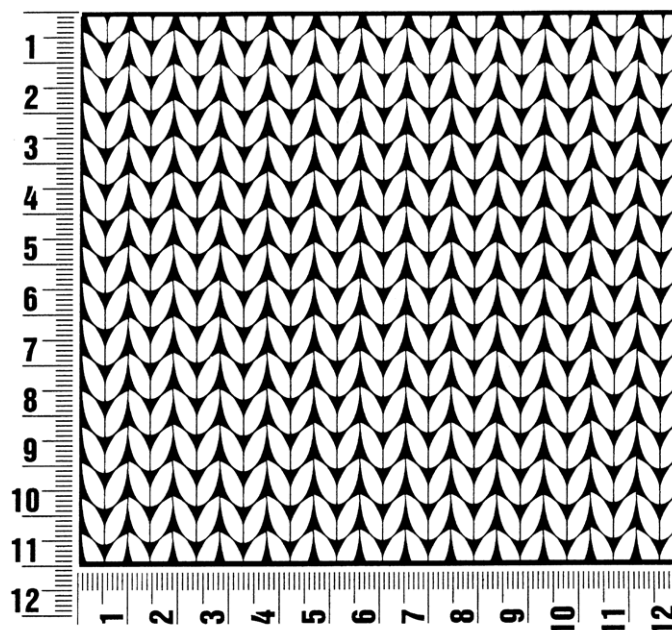
- = k1
- = p1
- ⊙ = make a yo, then sl next st twice
- = ptog slipped st with its yo



Gauge Swatch

Before you begin ...

...make a gauge swatch. Use the recommended needles, yarns and pattern stitch for your gauge swatch. It should measure approx. 12 cm x 12 cm. Cast-on and bind-off rows, as well as selvage stitches should not be included in the measurement. Pin your swatch and block it as you would the finished pieces of the garment. Count stitches and rows over 10 cm. If your gauge swatch is too small, switch to larger needles. If your gauge swatch is too big, switch to smaller needles.



Abbreviations

beg = begin(ning) · **ch** = chain · **cont** = continue · **dec** = decreas(e)(ing) · **inc** = increas(e)(ing) · **k** = knit · **kwise** = as if to knit
meas = measures · **M1L** = lift strand between sts from front to back and knit this strand through the back loop · **M1R** = lift strand between sts from the back and knit this strand through the front loop · **patt** = pattern · **pm** = place marker · **p** = purl
pwise = as if to purl · **rem** = remain(ing) · **rep** = repeat(s) · **rev St st** = reverse stockinette stitch · **rnd(s)** = round(s) · **RS** = right side · **sc** = single crochet · **skp** = slip 1 stitch as if to knit, knit 1 stitch, pass slipped stitch over knitted stitch · **sk2p** = slip 1 stitch as if to knit, knit 2 together, pass slipped stitch over knitted stitch · **s2kp** = slip 2 stitches as if to knit, k 1 stitch, pass slipped stitches over knitted stitch · **sl** = slip · **st(s)** = stitch(es) · **St st** = stockinette stitch · **tbl** = through the back loop · **tog** = together · **wyib** = with yarn in back of work · **wyif** = with yarn in front of work · **WS** = wrong side · **yo(s)** = yarn over(s)

Publisher's Info

Publisher: Lana Grossa GmbH, Gaimersheim, www.lana-grossa.com

Photographer: Wilfried Wulff, www.wilfriedwulff.com