



www.lanagrossa.com



PULLOVER • ABOUT BERLIN CHILLY

Design 03 from Lookbook 06

PULLOVER • ABOUT BERLIN CHILLY

Design 03 from Lookbook 06



www.lanagrossa.com

Size 36 (38/40, 42/44)

Instructions are given for first size. Figures in parenthesis refer to larger sizes. When only one figure is given, it applies to all sizes.

Materials: 400 (500, 550) g of Lana Grossa **About Berlin Chilly** (100% linen; 95 m/50 g) in Olive (**col 2**) and 50 g in Grey/Green (**col 3**). Size 4 and 5 mm needles; size 4 mm circular needle, 40 cm long; three 14 mm buttons [by Union Knopf, item 37604, col 12].

St st: K on RS, p on WS.

Full-fashion dec: At beg of RS row, selvage st, k2, skp; at end of RS row, work to last 5 sts, k2tog, k2, selvage st.

Gauge: 18 sts and 30 rows = 10 x 10 cm in St st on size 5 mm needles.

Back: With size 4 mm needles and Grey/Green cast on 88 (96, 102) sts. K 1 WS row. Work in St st for 8 rows. Break Grey/Green. With size 5 mm needles and Olive cont in St st and shape sides as foll: Inc 1 st at each end of 60th row from cast-on = 90 (98, 104) sts. Work even until piece meas 39.5 cm from cast-on, ending with a WS row. Shape raglan: Bind off 4 (5, 5) sts at beg of next 2 rows. Working full-fashion dec, dec 1 st at each end of next 25 (28, 31) RS rows = 32 sts. Work 1 WS row. Bind off all sts.

Front: Work same as for back until piece meas 30 (32, 34) cm from cast-on, ending with a WS row. Divide for placket: Next row (RS): Bind off center 4 sts. Working each side separately, work even for 8.5 cm. Shape V-neck: Working full-fashion dec, dec 1 st at each neck edge every RS row 4 times, then every other RS row 9 times. At same time, when piece meas 39.5 cm from cast-on, shape raglan as foll: Bind off 3 (4, 4) sts at each armhole edge. Working full-fashion dec, dec 1 st at each armhole edge every RS row 23 (26, 29) times. Work 1 WS row. Bind off rem 4 sts for each shoulder.

Left sleeve: With size 4 mm needles and Grey/Green cast on 46 (50, 54) sts. K 1 WS row. Work in St st for 8 rows. Change to size 5 mm needles. Cont in St st until a total of 31 rows has been worked from cast-on. Break Grey/Green. Work remainder of sleeve with Olive. At same time, shape sleeve as foll: Inc 1 st at each end of 10 (10, 8)th row from cast-on, then every 10th row 10 times (then every 10th row 3 times, then every 8th row 9 times / then every 8th row 13) times = 68 (76, 82) sts. Work even until piece meas 40 cm from cast-on, ending with a WS row. Shape sleeve cap: Next row (RS): Bind off 4 (5, 5) sts, k to end. Next row (WS): Bind off 3 (4, 4) sts, p to end = 61 (67, 73) sts. Working full-fashion dec, dec 1 st at each end of next 23 (26, 29) RS rows = 15 sts. Next row (WS): Bind off 5 sts, p to end. Next row (RS): Dec 1 st, k to end. Next row (WS): Bind off 4 sts, p to end. Next row (RS): Dec 1 st, k to end. Next row (WS): Bind off rem 4 sts.

Right sleeve: Work same as for left sleeve, reversing cap shaping.

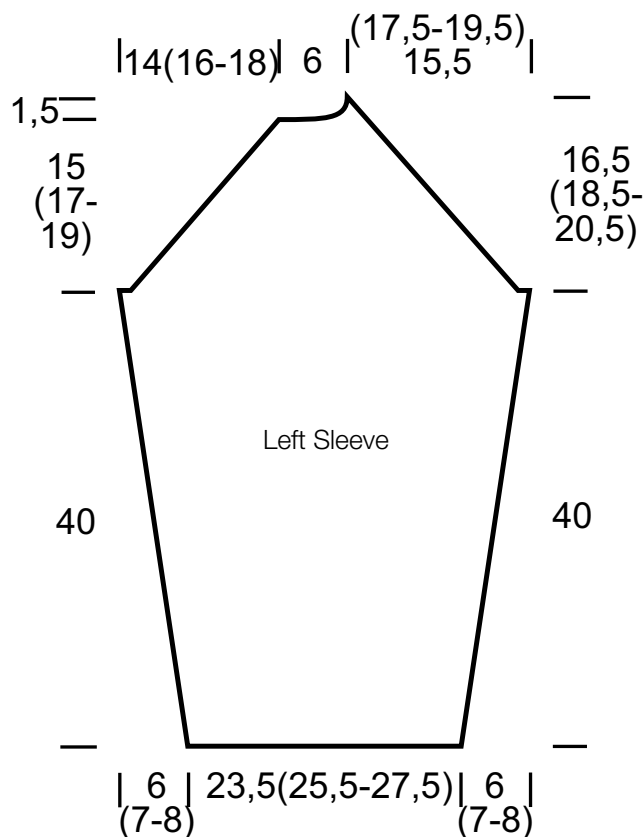
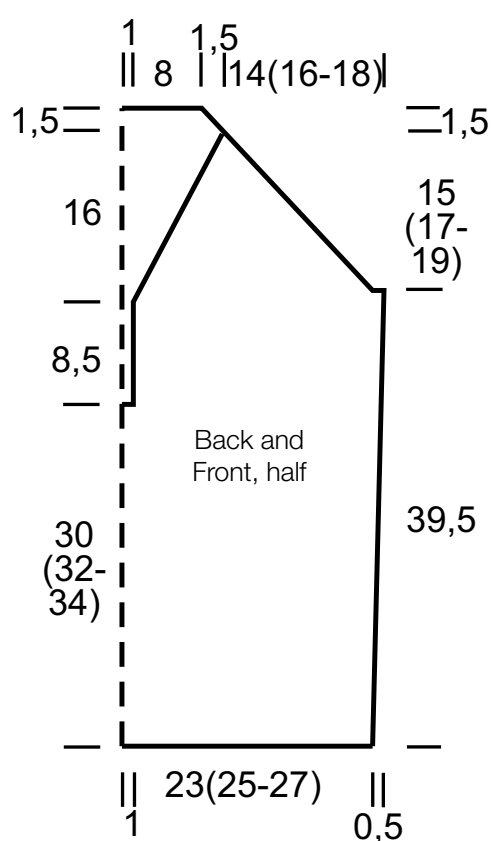
Finishing: Pin pieces to measurements and block. Sew raglan seams. Neckband: With size 4 mm circular needle and Olive, pick up and k 66 sts along right placket and right front neck edge, then with Grey/Green, pick up and k 30 sts along back neck edge, then with Olive, pick up and k 66 sts along left front neck and left placket edge = 162 sts. Work each block of color with separate ball of yarn or bobbin. Twist yarns around each other at each color change to prevent holes. Work in St st for 1 cm. Next row (RS): Work in St st, work 3 buttonholes evenly spaced along right placket edge. For each buttonhole, [k2tog, yo]. Cont in St st for 1 cm more. Bind off all sts. Sew side and sleeve seams. Sew on buttons.

PULLOVER • ABOUT BERLIN CHILLY

Design 03 from Lookbook 06



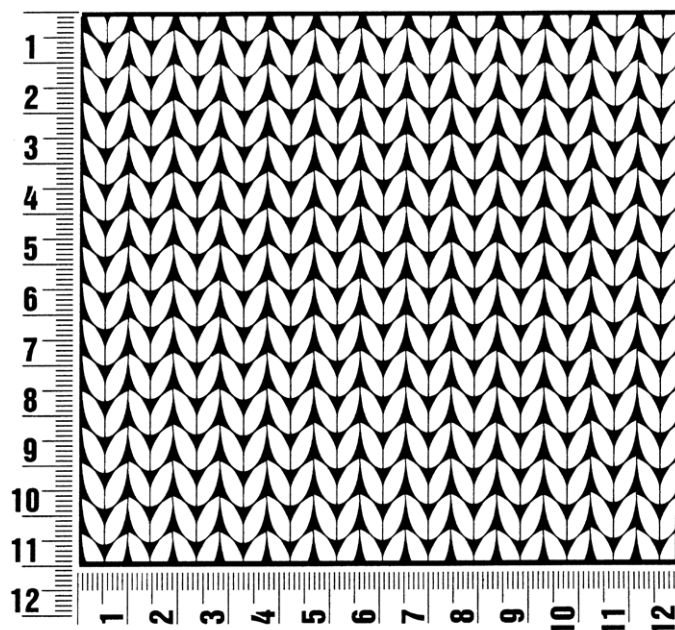
www.lanagrossa.com



Gauge Swatch

Before you begin ...

...make a gauge swatch. Use the recommended needles, yarns and pattern stitch for your gauge swatch. It should measure approx. 12 cm x 12 cm. Cast-on and bind-off rows, as well as selvage stitches should not be included in the measurement. Pin your swatch and block it as you would the finished pieces of the garment. Count stitches and rows over 10 cm. If your gauge swatch is too small, switch to larger needles. If your gauge swatch is too big, switch to smaller needles.



Abbreviations

beg = begin(ning) · **ch** = chain · **cont** = continue · **dec** = decreas(e)(ing) · **inc** = increas(e)(ing) · **k** = knit · **kwise** = as if to knit
meas = measures · **M1L** = lift strand between sts from front to back and knit this strand through the back loop · **M1R** = lift strand between sts from the back and knit this strand through the front loop · **patt** = pattern · **pm** = place marker · **p** = purl
pwise = as if to purl · **rem** = remain(ing) · **rep** = repeat(s) · **rev St st** = reverse stockinette stitch · **rnd(s)** = round(s) · **RS** = right side · **sc** = single crochet · **skp** = slip 1 stitch as if to knit, knit 1 stitch, pass slipped stitch over knitted stitch · **sk2p** = slip 1 stitch as if to knit, knit 2 together, pass slipped stitch over knitted stitch · **s2kp** = slip 2 stitches as if to knit, k 1 stitch, pass slipped stitches over knitted stitch · **sl** = slip · **st(s)** = stitch(es) · **St st** = stockinette stitch · **tbl** = through the back loop · **tog** = together · **wyib** = with yarn in back of work · **wyif** = with yarn in front of work · **WS** = wrong side · **yo(s)** = yarn over(s)

Publisher's Info

Publisher: Lana Grossa GmbH, Gaimersheim, www.lanagrossa.com
Photographer: Nicolas Olonetzky c/o Bascha Kicki Fotografen, www.bascha-photographers.de