



[www.lanagrossa.com](http://www.lanagrossa.com)

# **PULLOVER · ABOUT BERLIN CHILLY**

Design 10 from Filati Classici 16

Photo: Wilfried Wulff, [www.wilfriedwulff.com](http://www.wilfriedwulff.com)

# PULLOVER · ABOUT BERLIN CHILLY

## Design 10 from Filati Classici 16



www.lanagrossa.com

### Size 48/50 (52/54, 56)

Instructions are given for first size. Figures in parenthesis refer to larger sizes. When only one figure is given, it applies to all sizes.

**Materials:** 600 (650, 700) g of Lana Grossa **About Berlin Chilly** (100% linen; 95 m/50 g) in Charcoal (col 9). Size 3.5 and 4.5 mm needles; size 3.5 mm circular needle, 40 cm long.

**Rib patt:** K1, p1.

**St st:** K on RS, p on WS.

**Herringbone patt:** Multiple of 6 + 1 + 2 selvage sts. Work according to chart. Numbers at right edge of chart indicate RS rows; on WS rows, p all sts. Rep rows 1 – 4.

**Full-fashion dec:** At beg of RS row, selvage st, k1, skp (sk2p); at end of RS row, work to last 4 (5) sts, k2tog (k3tog), k1, selvage st - 1(2) st(s) decreased at each edge.

**Gauge:** 17 sts and 24 rows = 10 x 10 cm in herringbone patt on size 4.5 mm needles.

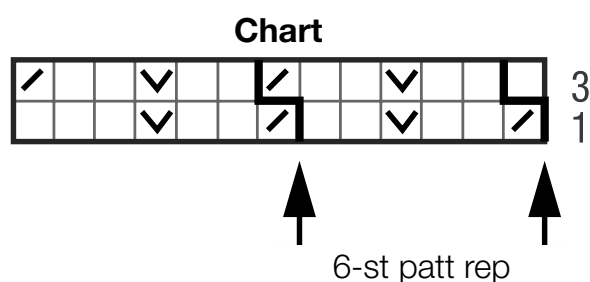
**Back:** With size 3.5 mm needles cast on 99 (105, 111) sts. Work in rib patt for 1 WS row, then work in St st until piece meas 4 cm from cast-on, ending with a WS row. Change to size 4.5 mm needles. Next row (RS): Selvage st, work herringbone patt to last st [= 15 (16, 17) patt reps and 7 sts after patt rep], selvage st. Cont to foll chart until piece meas 38 cm from cast-on, ending with a WS row. Shape armholes: Working full-fashion dec, dec 2 sts at each end of next 3 RS rows, then dec 1 st at each end of next 3 RS rows = 81 (87, 93) sts. Cont in patt until armhole meas 22 (23, 24) cm, ending with a WS row. Shape shoulders and

neck: At each shoulder edge, bind off 6 (7, 8) sts once, 7 (8, 9) sts twice. At same time, on first row of shoulder shaping, shape neck as foll: Bind off center 37 sts. Working each side separately, bind off 2 sts at each neck edge once. No sts rem.

**Front:** Work same as for back until piece meas 56 (57, 58) cm from cast-on, ending with a WS row. Shape neck: Next row (RS): Bind off center 23 sts. Working each side separately, bind off 3 sts at each neck edge once. Working full-fashion dec, dec 2 sts at each neck edge twice, 1 st twice and at same time, when same length as back to shoulders, shape shoulders same as for back. No sts rem.

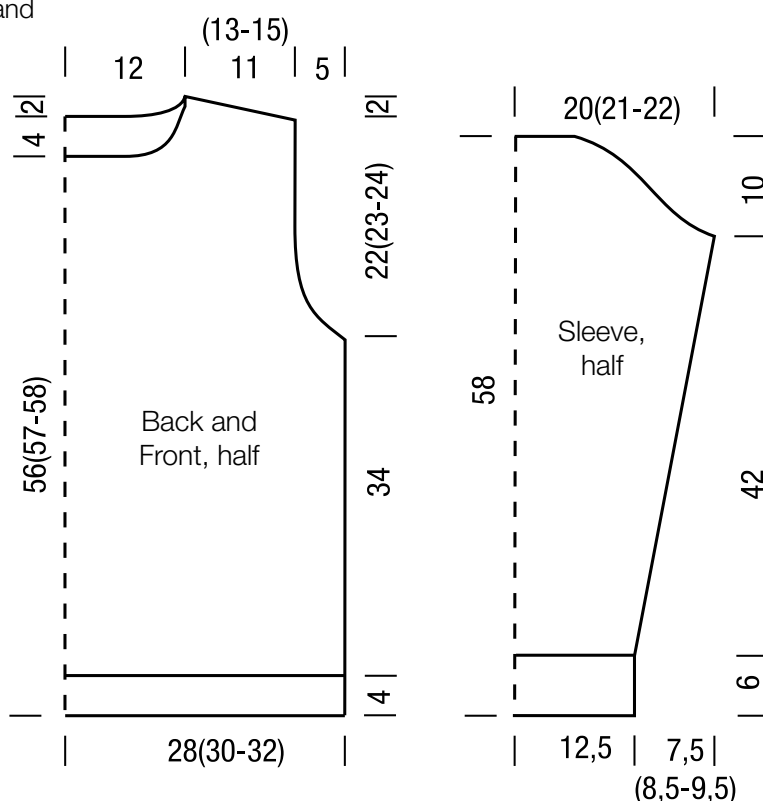
**Sleeves:** With size 3.5 mm needles cast on 45 sts. Work in rib patt for 1 WS row, then work in St st until piece meas 4 cm from cast-on, ending with a WS row. Change to size 4.5 mm needles. Next row (RS): Selvage st, work herringbone patt to last st [= 6 patt reps and 7 sts after patt rep], selvage st. Cont to foll chart and shape sleeve as foll: Inc 1 st at each end of 9 (9, 7)th row worked in herringbone patt, then every 8th row 11 times (then every alt 6th and 8th row 11 times, then every 6th row twice / then every 6th row 15 times) = 69 (73, 77) sts. Work increased sts into patt. Work even until piece meas 48 cm from cast-on, ending with a WS row. Shape sleeve cap: Bind off 4 sts at beg of next 2 rows, 3 sts at beg of next 6 rows, 2 sts at beg of next 12 rows, 3 sts at beg of next 4 rows. Bind off rem 7 (11, 15) sts.

**Finishing:** Pin pieces to measurements and block. Sew shoulder seams. **Neckband:** With size 3.5 mm circular needle, pick up and k 108 sts evenly around neck edge. Join for working in rnds. K 8 rnds, then work rib patt in rnds for 1 rnd. Bind off all sts in rib. Sew in sleeves. Sew side and sleeve seams.



### Chart key:

- ☐ = k1
- ☒ = k2tog
- ☒ = M1R





## Gauge Swatch

### Before you begin ...

...make a gauge swatch. Use the recommended needles, yarns and pattern stitch for your gauge swatch. It should measure approx. 12 cm x 12 cm. Cast-on and bind-off rows, as well as selvage stitches should not be included in the measurement. Pin your swatch and block it as you would the finished pieces of the garment. Count stitches and rows over 10 cm. If your gauge swatch is too small, switch to larger needles. If your gauge swatch is too big, switch to smaller needles.



## Abbreviations

**beg** = begin(ning) · **ch** = chain · **cont** = continue · **dec** = decreas(e)(ing) · **inc** = increas(e)(ing) · **k** = knit · **kwise** = as if to knit  
**meas** = measures · **M1L** = lift strand between sts from front to back and knit this strand through the back loop · **M1R** = lift strand between sts from the back and knit this strand through the front loop · **patt** = pattern · **pm** = place marker · **p** = purl  
**pwise** = as if to purl · **rem** = remain(ing) · **rep** = repeat(s) · **rev St st** = reverse stockinette stitch · **rnd(s)** = round(s) · **RS** = right side · **sc** = single crochet · **skp** = slip 1 stitch as if to knit, knit 1 stitch, pass slipped stitch over knitted stitch · **sk2p** = slip 1 stitch as if to knit, knit 2 together, pass slipped stitch over knitted stitch · **s2kp** = slip 2 stitches as if to knit, k 1 stitch, pass slipped stitches over knitted stitch · **sl** = slip · **st(s)** = stitch(es) · **St st** = stockinette stitch · **tbl** = through the back loop · **tog** = together · **wyib** = with yarn in back of work · **wyif** = with yarn in front of work · **WS** = wrong side · **yo(s)** = yarn over(s)

### Publisher's Info

**Publisher:** Lana Grossa GmbH, Gaimersheim, [www.lanagrossa.com](http://www.lanagrossa.com)

**Photographer:** Wilfried Wulff, [www.wilfriedwulff.com](http://www.wilfriedwulff.com)